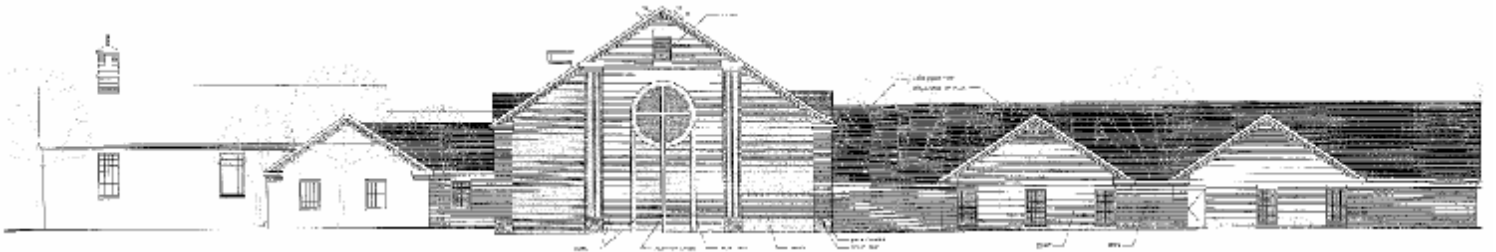


2008 ANNUAL REPORT

Hilliard Presbyterian Church
3600 Leap Road
PO Box 63
Hilliard, Ohio 43026
Phone: 614-876-7121
Fax: 876-8951
Website: www.hilliardpres.org



Prepared for the Annual Meeting of the congregation to be held on February 8, 2009

Table of Contents

Docket for Annual Meeting	3
Elders/Board of Deacons/Nominating Committee/Staff	4
Clerk of Session's Report	5
Congregational Meeting Minutes	8
Staff Reports	
Pastor	10
Director of Christian Education	11
Director of Music	12
Financial Reports	
Treasurer	13
Financial Secretary	19
Congregational Committee Reports	
Building Committee	20
Session Committee Reports	
Administration	21
Music and Worship	22
Stewardship	24
Mission and Outreach	25
Facilities	27
Reports for Boards and Organizations	
Presbyterian Women	29
Deacons	32
2009 Budget	34
Change in Pastor's Terms of Call	36

Docket

Annual Meeting of the Congregation
Hilliard Presbyterian Church
February 8, 2009

Call to Order and Opening Prayer

Acknowledgement of Clerk
Establishment of Forum

Discussion and Reception of 2008 Annual Report

2008 Budget
Presentation
Discussion

Other Business
Approval of changes in terms of call

Closing Prayer

Your attention is drawn to paragraph of G-7.0304 of the book of Order which limits the sort of business which can be enacted at Congregational Meetings.

G-7.0304

A. Business to be transacted at meetings of the congregation shall include the following:

- 1. matters relating to the electing of elders, deacons and trustees;*
- 2. matters related to the calling of a pastor or pastors:*
- 3. matters related to the pastoral relationship*
- 4. matters related to buying, mortgaging, or selling real property*
- 5. matters related to the permissive powers of a congregation, such as the desire to lodge all administrative responsibility in the session, or the request to presbytery for exemption from one or more of e requirements because of limited size.*

B. Business at congregational meetings shall be limited to the forgoing matters {1} through {5}. Whenever permitted by civil law, both ecclesiastical and corporate business may be conducted at the same congregational meeting.

Session and Board of Deacons

Pastor: Jim Browne

Session

Clerk: Dave Norton

Class of 2009

Tony Trimboli
Greg Bohn
Nancy Callison
Terry Butterworth

Class of 2010

Paula Garman
Earl Osborne
Karen Brown
Doug Browne

Class of 2011

Melanie Martin
Dottie Eaton
Ed Hall
Mary Norton

Board of Deacons

Class of 2009

Betty Affeldt
Beth Lewis

Class 2010

Eve Goodwyn
Teresa Johnson

Class of 2011

Lisa Browne
Jim Ray

Hilliard Presbyterian Church Staff

Pastor
Parrish Associate
Director of Christian Education
Director of Music
Organist
Treasurer
Office Manager
Nursery Supervisors

Jim Browne
Jill Rasmussen-Baker
Kim Trimboli
Beth Clothier
Isaac Leaverton
Dave Hulburt
Beth Lewis
Charlie Ryan
Dani Ryan

Nominating Committee

Dottie Eaton – Elder and chair
Nancy Callison-Elder
Betty Affeldt-Board of Deacons

CLERK OF SESSION'S ANNUAL REPORT

February 9, 2009

The Clerk of Session is responsible for preparing the monthly statistical report, taking and distributing minutes of Session meetings, serving as Secretary for Congregational meetings, receiving and sending directed communications, overseeing the records of the church, presenting the permanent record for annual Presbytery review, preparing specific reports to the General Assembly and Presbytery and serving as a link between HPC and Presbytery.

Session Meetings

The Session held a regular stated meeting every month, generally on the second Thursday of the month. In addition, the following special meetings here held:

May 4 To receive new members.
July 21 To receive new members.
October 5 To receive new members.
December 1 To discuss the 2009 budget.
December 18 To examine and set ordination and installation of newly elected officers.

Congregational Meetings

There were three Congregational Meetings during the year:

February 10 To receive the 2007 Annual Report, approve changes to the Pastor's Terms of Call, and receive the 2007 budget.
April 27 To approve the securing of a mortgage not to exceed 1.4 million dollars from National City Bank.
November 16 To elect Elders, Deacons and Congregational members to the Church nominating committee and the endowment committee.

Church Committees and Chairpersons

Administration	Paula Garman
Christian Education	Greg Bohn
Facilities	Terry Butterworth
Mission/Outreach	Tony Trimboli
Worship	Dave Johnson
Stewardship	Karmel Randall
Technology	Doug Browne
Nominating	Doug Browne

Persons Hired by the Session

Director of Christian Education	Kimberly Trimboli
Director of Music	Beth Clothier
Church Office Manager	Beth Lewis
Church Treasurer	Dave Hulburt
Financial Secretary	Beth Lewis
Organist	Isaac Leaverton & Joshua Broadbeck
Nursery Supervisor	Charley Ryan and Dani Ryan

Membership

Hilliard Presbyterian Church began 2008 with an active membership of 215. Three new member classes and brought 7 new members to HPC. There were twenty-two members removed from the rolls during the course of the year, leaving an ending active membership of 200.

Session Actions

Session has over view of all church programs and ultimate approval of all church activities. Session receives new member, approves person hired to non-clergy staff and appointed program positions, approves Communion dates and Baptisms, and approves the budget and any revisions to the budget.

In addition, the following Session actions are of interest and generally are in chronological order for the year:

- Elected David Hulburt as Treasurer and Beth Lewis as Financial Secretary for 2008.
- Accepted the resignation of Rev. Eleanor Cherryholmes as Parish Associate.
- Approved HPC participation in the summer lunch program.
- Approved applying with Synod to host a church leader from the South Pacific for 6 weeks.
- Approved the hiring of Joshua Broadbeck as organist.
- Approved the establishment of the "Tithe" fund and request the congregation tithe their Federal Government Rebate checks.
- Approved holding a ground breaking worship service on June 1, 2008.
- Approved Dave Norton and Dave Opalek to sign all necessary documents for the current building program.
- Approved the resignation of Joshua Broadbeck as organist.
- Granted the Worship and Music committee permission to sell the current organ with the understanding that it will not be removed prior to the completion of the new sanctuary.
- Approved the hiring of Isaac Leaverton as organist.
- Approved the recommendation of the Pastor to enter into a Parish Associate relationship with Rev. Jill Rasmussen-Baker.
- Approved entering into an agreement with the Hilliard YMCA for a 2009 summer program.
- Decided to continue with two worship services each Sunday.
- Approved the 2009 budget.

Respectfully submitted,

David Norton
Clerk of Session

[Annual Congregational Meeting](#)

Hilliard Presbyterian Church
February 10, 2008

The meeting was held in the sanctuary immediately following the 11:00 worship service. Moderator: Rev. Jim Browne.

The Moderator opened the meeting with prayer. The moderator appointed David Norton, Clerk of Session as Secretary of the meeting.

The Secretary stated the meeting had been properly called and that a quorum was present.

The session presented the Annual Report. Following discussion, the Congregation **voted** to receive the Annual Report.

The 2008 budget was presented to the congregation. Following discussion, the congregation **voted** to receive the 2008 HPC Budget.

Elder Paula Garman, Chair of the Administration Committee, presented proposed changes in the Terms of Call of Rev. Jim Browne:

- Salary increase from \$29,380 to \$29,432.
- Housing allowance increase from \$28,860 to \$30,000.
- Pension/Medical benefits increase from \$18,346 to \$18,721.
- Travel allowance decrease from \$2,600 to \$2,000.
- Continuing education increase from \$1,600 to \$2,200.
- Professional expense decrease from \$2,800 to \$2,000.

Other portions of the terms of call to remain the same including vacation and study leave.

The congregation **voted** to approve the changes in the terms of call of Rev. Jim Browne.

There being no other business to come before the meeting, the Moderator closed the meeting with prayer.

Respectfully submitted,

Rev. Jim Browne
Moderator

David Norton
Secretary

Called Congregational Meeting
Hilliard Presbyterian Church
April 27, 2008

The call of the meeting was to gain congregational approval of securing a mortgage not to exceed \$1.4 million dollars from National City Bank, the way being clear.

The meeting was held in the sanctuary immediately following the 11:00 AM worship service. Rev. Jim Browne, Moderator. The Moderator opened the meeting with prayer. The Moderator appointed Dave Norton, Clerk of Session as Secretary for this meeting. The secretary stated that the meeting had been properly called and that a quorum was present.

Dave Norton, Chair of the Building Committee and representing the Building Committee **moved** that the congregation of Hilliard Presbyterian Church grant Session the authority to secure a mortgage on our property in an amount not to exceed \$1.4 million dollars, the way being clear (Presbytery approval is still pending).

Following a period of questions and answers and prior to the vote, a request was made to vote using paper ballots. Upon general consent of those present for the use of paper ballots, the Moderator appointed Harold Doust, Cindy Cummins and Barb Cesta as Tellers for the purpose of tabulating the vote.

Teller Harold Doust presented the Moderator with the results of the voting and **motion was approved**.

There being no other business to come before the meeting, it was moved, seconded and approved to adjourn the meeting.

The Moderator adjourned the meeting with prayer.

Respectfully submitted,

Rev. Jim Browne
Moderator

David Norton
Secretary

Called Congregational Meeting
Hilliard Presbyterian Church
November 16, 2008

The meeting was held in the sanctuary following worship. The Moderator Rev. Jim Browne, opened the meeting with prayer.

The moderator appointed clerk of session David Norton secretary of the meeting. The secretary stated that the meeting was properly called and that a quorum was present.

The call of the meeting was to hear and act on the report of the nominating committee.

Elder Doug Browne, chairman of the nominating committee presented Tony Trimboli to fill an unexpired term for the office of Elder for the class of 2009 and Earl Osborne to fill an unexpired term for the office of Elder for the class of 2010. Following a call for nominations from the floor, the congregation **voted** to close the nominations and elect the nominees to the office of Elder.

Elder Doug Browne, chairman of the nominating committee presented Mary Norton, Dottie Eaton, Ed Hall and Melanie Martin for the office of Elder for the class of 2011. Following a call for nominations from the floor, the congregation **voted** to close the nominations and elect the nominees to the office of Elder.

Elder Doug Browne, chairman of the nominating committee presented Lisa Browne and Jim Ray for the office of Deacon for the class of 2011. Following a call for nominations from the floor, the congregation **voted** to close the nominations and elect the nominee to the office of Deacon.

Elder Doug Browne, chairman of the nominating committee presented Matt Butterworth, Becky Dailey, Harold Doust and Arlene Martin to serve on the Congregational Nominating Committee for 2009. Following a call for nominations from the floor, the congregation **voted** to close the nominations and elected the nominees to serve on the Congregational Nominating Committee.

Elder Doug Browne, chairman of the nominating committee presented Millie Raver to serve on the Endowment Committee for the class of 2011. Following a call for nominations from the floor, the congregation **voted** to close the nominations and elect the nominee to serve on the Endowment Committee.

There being no other business to come before the meeting, the congregation **voted** to adjourn the meeting.

The Moderator closed the meeting with prayer.

Respectfully submitted,

Rev. Jim Browne, Moderator

David Norton, Secretary

Year End Report
Pastor Jim Browne
Hilliard Presbyterian Church 2008

The year 2008 is the tenth year I have been privileged to serve as Pastor of Hilliard Presbyterian Church. In many ways it feels as though I have been pastor here for a very long time, and in other ways I realize how much I still can learn about this place.

As I look back several times are clear; I look back to a sabbatical time, to moderating the presbytery, to working on the General Assembly held here in Columbus. I think back to the number of times I have stood with one of you at the funeral of one you loved, the times I have seen a tear fill many eyes as we pause for baptism, times I have served you communion, and times we have shared the ashes of remembrance on Ash Wednesday. We have gone on Mission trips, I love those memories I share with many of you.

Worship is always important to our life together and I think of memorable services we have shared. Christmas Eve services, and Easter, the living Upper Room presentation and both early morning and late afternoon services during various Holy Weeks. I rejoice at the great number of you who have served as lay leaders in worship, those who serve communion, those who plan worship.

I give thanks for the number of you who have persevered and taken the long *Disciple* studies, as well as the shorter ones. *Breakfast with the Bible* and the *Nooma* videos are all educational memories that make this decade of my life memorable.

One of the great blessings of working here has been the amazing people God has called to serve here with me. Parish Associates Eleanor, Neil and Jill, Staff colleagues Sandy, Beth, Kim and Beth, strong congregational leaders too many to mention. I truly believe that ministry should be a shared venture, and I am grateful that you have often shared the journey with me.

This year in particular is one which I will remember for our beginning the building phase of our addition/renovation. It is surely not the beginning, we have been praying and dreaming about it for years, but it was the visible beginning. There is work yet to be done, there is much to finish. But 2008 gave us the beginning of actually building. Dave Norton's strong leadership here is very appreciated.

God is good. The work we are called to is do-able with God's help. The physical setting is nice and soon to be wonderful. The staff and leaders with whom I work are a blessing.

Pastorally,

Jim Browne

Annual Report 2008
Director of Christian Education

In the first part of this year in Sunday School, all ages continued to learn about different themes from the Joseph story through our year of Jubilee. This included themes such as family relationships, prayer, and forgiveness. We found that the Breakfast with the Bible programs were well received. When the Jubilee program ended we continued with these intergenerational mornings once a month which allow us to fellowship and study as the whole family with all ages present. Adults also indicated their appreciation of the Nooma videos by Rob Bell, and so we have continued a regular offering of these studies on Sunday mornings for adults and youth.

Our youth program is a small but very loyal group. They are meeting regularly with a deliberate balance of study, fellowship and service. Three students also began meeting on Sunday evenings this fall as a part of the 2009 Confirmation Class.

The Word On Wednesday Program continued through the winter and early spring learning about creation, shepherds and caring for others. This fall the group enjoyed the presence and participation of Maine, our visiting Mission Partner. The children are spending the '08 – '09 year learning about the parts of the worship service and how to participate effectively in worship, which is also the topic of their Sunday School classes. The children regularly invite friends to participate in WOW, and Wednesdays are a very busy evening.

This summer, in place of VBS, we continued with Church Family Faith Nights. Church Family Faith Nights were held once a month, and included opportunities for members of our church family to consider worship as an important part of our lives. I hope that these events were useful to those who participated, and will continue to contribute to the faith development of all of our members.

I was pleased to be able to lead a group of youth and adults to Staten Island New York for Project Hospitality mission project. While in New York we worked in food pantries, soup kitchens, and other tasks to assist the Project in helping the poor in their area. We also had the opportunity to learn about causes of poverty and the continuing impact of HIV / AIDS in our country.

I continued in my second year of writing curriculum for the national Presbyterian curriculum "We Believe Workshop". I also began a part time Seminary education at the Methodist Theological School in Ohio by taking a class titled Introduction to Christian Theology. This has been part of the process of beginning my pursuit of the call to the ordained ministry. I appreciate the congregation's support as I have been involved in these endeavors.

While construction has raised many challenges in changing rooms and moving supplies, the Christian Education participants (and I!) have enjoyed the opportunity to have temporary walls to use as mural spaces and educational tools!

Sincerely,

Kim Trimboli

Director of Music Annual Report 2008

We have had two talented organists with us during 2008. Joshua Brodbeck joined us in January and left in August to go to Indiana University to study with his organ professor Todd Wilson at the school of music. Isaac Leaverton, now a sophomore Music Education major at Capital University has been with us since September 2008. Betsy Ward ended her time with us after spending a year working with the children's choir, starting a Youth Choir (the Minor Thirds) and working also with the Chancel Choir.

Betsy Ward and I were delighted to have the choirs of HPC assist us in completing our comprehensive juries which are a requirement for the MACM degrees we are both seeking at Trinity Lutheran Seminary. Betsy moved home at the end of the fall semester to finalize the plans for her marriage to Stephen Friedrich, they were married on January 10, 2009. In addition to an MACM degree, I am also seeking an MDiv. This will add two years to my time at seminary.

Several choir members traveled to Michigan to attend a weekend choir and music workshop. We stayed and sang for worship under the direction of Tom Trenney.

As we have watched new space being built at HPC, the choirs are excited about a new choir room, new worship space and all that goes with it. To compliment the new space, we will be purchasing a new organ. The organ committee began its work mid-year 2008 and continues under the chairmanship of Brad Patch. This is truly an exciting time for HPC!

I am grateful to all of the members of the HPC Chancel Choir, the Circle of Fifths, the Chime Choir, the Minor Thirds and the children's choir who gave of their time and talent to provide beautiful music that enhances our worship services.

Thank you to all who support the music programs in all ways, and a special thank you to members of the Music and Worship committee for handling all the behind the scenes work that is necessary for our worship services and music programs.

Respectfully Submitted,

Elizabeth (Beth) Clothier
Director of Music

Treasurer's Annual Report
2008

Hilliard Presbyterian Church - Hilliard, OH 43025
Balance Sheet as of December 31, 2008

Page 1

Account #	Account Name	Reporting Balance	Year to Date
Assets			
10101	Campaigns Checking	120,448.74	71,052.79
10102	Campaigns Savings Acct	2,245.68	0.00
10103	Cash Pending Deposit	749.10	0.00
10111	National City Checking	0.00	10,075.09
10112	National City Money Market	0.00	20,437.75
10201	Champaigne Savings Checking	754.46	0.00
10401	New Covenant Bldg Growth Fd	12,496.65	8,767.87
10402	New Covenant Bldg Income Fd	13,569.87	10,451.15
10403	New Covenant Money Market	0.00	2,078.43
10812	Petty Cash	110.72	110.72
	Total Assets	<u>5156,773.33</u>	<u>195,527.73</u>
Liabilities and Fund Balances			
23001	Retired Loans Payable	182.24	166.76
23002	PCA Taxes Payable	759.64	780.68
23005	Medicare Taxes Payable	177.48	182.56
24001	Workers Comp Payable	273.92	271.42
25001	State Taxes Payable	356.92	311.34
26001	City Taxes Payable	424.13	444.28
	Total Liabilities	<u>32,226.03</u>	<u>32,416.04</u>
30101	Unexp'd Operating Budget	1,552.87	115.13
30201	Major, Major & Exp Imppr	8,275.86	7,780.96
30301	Building Fund	102,627.25	31,307.67
30401	Endowment Fund-Cash	29.00	215.00
30402	Endowment Investment	24,178.39	24,178.39
30403	Endowment Inv Return	339.24	1,661.95
30404	Endowment Invest Growth	1,132.20	(6,523.65)
	Subtotal Endowment Investment	<u>26,169.83</u>	<u>19,214.09</u>
	Total Endowment Fund	<u>26,189.83</u>	<u>19,329.09</u>
30411	Mission & Development Fund	2,359.78	3,009.78
30412	Church Development Fund	89.00	89.00
30212	Manorial Fund	404.00	404.00
30222	Hazell Fund	2,176.99	1,978.41
30303	Volunteer Mission Training Fd	3,823.65	2,238.55
30302	S.E.R.V. Fund	862.81	282.81
30303	Mission Trip Fund	50.00	0.00
30304	Gas Rebate Fund	0.00	3,062.64
30405	Christian Education Fund	0.00	680.64
30406	Adult Education Fund	285.22	378.22
30407	Trust Assistance Fund	216.22	498.22
30408	Youthcare Bible School Fund	210.31	1,283.57
30501	Staff Development Fund	250.00	250.00
30601	Lawa Redeem Fund	1,111.51	513.54
30991	Older Adult Home Fund	50.15	0.00
30992	Pentecost Fund	12.50	3.00
30993	Pentecost Fund	62.00	155.00
30994	Joy Offering Fund	951.00	0.00
	Total Fund Balance	<u>5154,502.30</u>	<u>583,111.69</u>
	Total Liabilities and Fund Balances	<u>5156,773.33</u>	<u>585,527.73</u>

Account Number	Account Name	Current Month	Year to Date	Monthly Enc 2008	Budget Year to Date	% of Budget YTD	Annual Budget
Income							
4010 0	Estimate of Giving	10,437.38	182,828.74	15,365.63	184,400.00	59	184,400.00
4010 1	UDA Envelope Giving	4,548.00	48,780.00	4,950.00	50,400.00	82	59,400.00
	Envelope Giving	\$24,935.38	\$231,408.74	\$20,316.63	\$234,800.00	95	\$243,800.00
4010 2	Letter Offering	519.11	2,713.67	238.37	2,500.00	100	2,500.00
4010 3	Letter Giving Contrib	0.00	306.00	0.00	300.00	87	350.00
4010 4	Cont. to Per Capita	0.00	2,683.20	0.00	3,200.00	81	3,200.00
4010 5	Cont. to Flowers	80.00	1,245.00	144.63	1,700.00	73	1,700.00
4010 6	Cont. to L O GDS	0.00	349.70	41.63	500.00	71	500.00
4010 7	Racial Income	100.00	1,300.00	62.50	950.00	173	750.00
4010 8	Misc Reimbursements	34.00	1,194.10	75.00	900.00	132	900.00
4010 9	Other Operating Income	15.50	1,328.45	350.00	4,200.00	32	4,200.00
4011 1	Bank Accounts Interest	109.29	3,088.58	125.00	1,500.00	267	1,500.00
	Non-Envelope Oper Income	\$674.90	\$14,228.60	\$1,004.13	\$15,600.00	91	\$25,600.00
	Total Budgeted Oper Income	\$24,710.28	\$245,632.43	\$21,320.76	\$250,400.00	95	\$250,400.00
4012 0	Unpaid BDO	0.00	0.00	0.00	0.00		0.00
4012 1	Price Year BDO	0.00	0.00	0.00	0.00		0.00
4012 2	Transfer to Operating	0.00	614.97	0.00	0.00		0.00
4012 3	Adjustments to Income	0.00	0.00	0.00	0.00		0.00
	Nonbudgeted Oper Income	\$0.00	\$614.97	\$0.00	\$0.00		\$0.00
	Total Operating Income	\$24,710.28	\$246,247.40	\$21,320.76	\$250,400.00	95	\$250,400.00
4020 2	Cont. Major Account & Exp. Imp.	0.00	3.00	0.00	0.00		0.00
4020 3	Maint. & Cap Exp. Interest	0.00	0.00	0.00	0.00		0.00
4020 4	Transfer to Maint. & Cap Imp.	0.00	0.00	0.00	0.00		0.00
4020 5	Cont. to Building Fund	5,064.02	95,275.53	0.00	0.00		0.00
4040 4	Cont. to Endowment Fund	0.00	95.00	0.00	0.00		0.00
4040 6	Endowment Income Reinvest	283.02	722.09	0.00	0.00		0.00
4040 7	Equity Invest Gain/Loss	0.00	(1,178.81)	0.00	0.00		0.00
4040 8	Cont. to Mission & Benevolence	50.00	50.00	0.00	0.00		0.00
4040 9	Cont. to HPC Development	0.00	0.00	0.00	0.00		0.00
4051 0	Contrib. Memorial Fund	105.00	604.00	0.00	0.00		0.00
4082 2	Cont. to Memorial Fund	0.00	0.00	0.00	0.00		0.00
4082 3	Cont. to Vol. Musician Fed.	0.00	250.00	0.00	0.00		0.00
4082 4	Secretary's Opera Contributions	0.00	0.00	0.00	0.00		0.00
4303 1	Pastor's Disc. Allowance Fund	0.00	0.00	0.00	0.00		0.00
4303 2	Cont. to SERV. Fund	0.00	0.00	0.00	0.00		0.00
4303 3	Cont. to Mission Trips	0.00	2,875.00	0.00	0.00		0.00
4303 4	Exp. Release Donation	0.00	680.00	0.00	0.00		0.00
4404 1	Cont. to Christian Education	0.00	1,000.00	0.00	0.00		0.00
4404 2	Cont. to Adult Ed. Fund	40.00	492.20	0.00	0.00		0.00
4404 3	Cont. to JHS Assist. Fund	173.79	173.79	0.00	0.00		0.00
4404 4	Cont. to VBS Fund	0.00	54.55	0.00	0.00		0.00
4404 5	Cont. to STEW Development	0.00	0.00	0.00	0.00		0.00
4406 1	Cont. to Lassa Mowea Fund	0.00	0.00	0.00	0.00		0.00
4407 1	Session Offering, Action Fund	0.00	0.00	0.00	0.00		0.00
4408 1	Cont. to Treas. Fund	0.00	0.00	0.00	0.00		0.00
4499 1	OCWS Offering	0.00	794.77	0.00	0.00		0.00
4499 2	Pentecost Offering	0.00	350.00	0.00	0.00		0.00
4499 3	Pres. Making Offering	0.00	620.00	0.00	0.00		0.00
4499 4	Christmas Joy Offering	555.30	555.00	0.00	0.00		0.00
4499 5	Supper Bowl Contributions	0.00	209.77	0.00	0.00		0.00
4499 6	Disaster Relief Contributions	0.00	0.00	0.00	0.00		0.00
	Total Special Offerings	\$556.00	\$2,740.54	\$0.00	\$0.00		\$0.00
	Total Non-Operating Income	\$6,271.83	\$100,721.96	\$0.00	\$0.00		\$0.00
	Total Income	\$30,982.11	\$346,971.36	\$21,320.76	\$250,400.00	95	\$250,400.00

Hilliard Presbyterian Church - Hilliard, OH 43026
 Treasurer's Report for January, 2008 through December, 2008

01/04/09

Page 3

Account Number	Account Name	Chrged Month	Year-to-Date	Monthly Budget	Budget Year to Date	% of Budget YTD	Annual Budget
Stewardship							
5100J	Stewardship	202.58	1,452.94	0.00	1,350.00	83	1,750.00
51101	Endowment Committee	0.00	0.00	20.87	230.00	0	230.00
	Stewardship	202.58	1,452.94	20.87	1,580.00	83	1,980.00
5200I	Gift Shop	125.00	725.00	75.00	900.00	81	900.00
52002	Office Supplies	0.00	1,650.00	83.37	1,000.00	165	1,000.00
52003	Maintenance	0.00	560.00	62.50	750.00	25	750.00
52101	Flowers	205.00	2,155.00	166.63	2,000.00	169	2,000.00
52201	Charitable	193.02	1,728.40	62.50	750.00	184	750.00
52302	Snippets	41.23	325.02	62.50	750.00	70	750.00
52301	Instrument Main Access	0.00	450.00	134.11	1,250.00	60	1,250.00
52302	Rite Maintenance	0.00	0.00	25.00	300.00	0	300.00
52401	Wedding/Funeral Organ/Choir	75.00	75.00	41.63	500.00	15	500.00
52507	Fixed Line Internet	56.50	830.00	69.52	835.00	99	835.00
52502	Fixed Line Principal	128.66	3,756.67	313.75	3,765.00	100	3,765.00
	Worship	11,411.73	112,269.88	11,066.63	112,800.00	96	112,800.00
53001	Decorations/Seasonal	0.00	3,000.00	1,500.00	6,000.00	50	6,000.00
53003	Love Offering	199.36	5,663.11	30.00	600.00	81	600.00
53004	CD/DVD Work	0.00	0.00	0.00	300.00	0	300.00
53201	Advertising	79.36	1,254.33	125.00	1,500.00	81	1,500.00
53302	Upper Room	0.00	211.10	18.75	225.00	24	225.00
53301	Mission Trips	646.77	1,245.27	125.00	1,500.00	35	1,500.00
53102	Special Events	0.00	71.77	25.00	300.00	24	300.00
53401	Quilts	9.58	21.32	16.63	200.00	11	200.00
	Education	51,254.37	56,350.29	11,360.38	110,425.00	64	110,425.00
54001	Children's School Curriculum	82.55	602.13	61.17	1,000.00	69	1,000.00
54041	Evangelism/Christian Testimony	0.00	100.00	0.00	0.00	0	0.00
54101	EVANGELISM	185.56	1,498.48	125.00	1,500.00	100	1,500.00
54201	Youth Ministries	9.88	743.76	125.00	1,500.00	51	1,500.00
54201	Vocational Bible School	(813.99)	0.00	62.50	750.00	0	750.00
54201	General Supplies	115.46	511.73	83.37	1,000.00	51	1,000.00
54302	CE Committee Expenses	0.00	261.11	41.63	500.00	52	500.00
54401	Passes & Student Recognition	0.00	283.86	44.91	400.00	21	400.00
54501	Campships	0.00	50.00	41.63	500.00	10	500.00
54502	Localship Training	0.00	0.00	25.00	300.00	0	300.00
54501	Cambion	0.00	1,149.25	62.50	750.00	102	750.00
	Christian Education	579.06	85,264.33	863.37	86,200.00	63	86,200.00
55001	Pastor Base Salary	2,261.00	29,432.00	2,264.00	29,432.00	100	29,432.00
55002	Housing Allowance - Pastor	2,500.00	30,000.00	2,500.00	30,000.00	100	30,000.00
55003	Pension/Medical - Pastor	1,550.00	18,721.08	1,500.00	18,721.08	100	18,721.08
55004	Travel Allowance - Pastor	299.50	7,079.89	166.63	2,000.00	102	2,000.00
55005	Commuting Allowance - Pastor	138.00	2,432.55	183.37	2,200.00	101	2,200.00
55006	Professional Expense - Pastor	205.71	1,742.37	166.63	2,000.00	60	2,000.00
	Subtotal Pastor	36,365.50	383,658.79	16,644.75	384,353.00	99	384,353.00
55101	Director of Christian Educ	4,325.00	32,338.00	2,326.00	32,338.00	100	32,338.00
55104	Director's Expense Reim - DCE	0.00	1,182.92	100.00	1,200.00	99	1,200.00
55201	Director of Music	1,332.00	14,226.00	1,000.00	14,226.00	100	14,226.00
55205	Business Expense Reim - DOM	0.00	0.00	33.37	400.00	0	400.00
55205	Organist	994.00	5,407.47	750.00	5,100.00	104	5,100.00
55301	Office Manager	1,176.00	15,288.00	1,175.00	15,288.00	100	15,288.00
55401	Child Care Workers	577.50	7,683.50	576.00	8,800.00	87	8,800.00
55501	Temporary Employees	0.00	120.00	16.63	200.00	60	200.00
55502	Self-Counseling Education	0.00	50.00	62.50	750.00	1	750.00
55502	Staff Development	0.00	0.00	30.00	600.00	0	600.00
55504	Non-employee Compensation	0.00	439.00	25.00	300.00	144	300.00
55601	Utilities	1,230.00	7,891.44	6,354.50	5,418.00	72	5,418.00
55701	Employment Taxes	481.62	6,087.40	423.00	6,150.00	59	6,150.00

Account Number	Account Name	Current Month	YTD to Date	Monthly Budget	Budget Year to Date	% of Budget YTD	Annual Budget
5 500 1	Workers Compensation	58.00	738.54	56.00	736.00	98	756.00
5 500 2	Terminace	583.50	2,477.50	0.00	3,000.00	114	1,000.00
5 500 3	Business Services	58.00	1,86.00	103.37	1,500.00	91	1,500.00
5 500 4	Bank Charges	0.00	55.55	8.37	100.00	57	100.00
5 500 5	Office Supplies	251.96	1,743.58	216.05	2,600.00	67	2,600.00
5 500 6	Postal Services	109.06	2,135.68	150.00	1,800.00	119	1,800.00
5 500 7	Committee Expenses	0.00	24.55	8.57	100.00	25	100.00
	Administration	\$16,255.50	\$184,159.36	\$15,675.49	\$189,251.00	97	\$189,251.00
5 600 1	Facilities Services	320.00	7,165.58	583.37	7,000.00	302	7,000.00
5 600 2	Supplies Consumable	251.95	1,797.13	150.00	1,800.00	140	1,800.00
5 600 3	Custodial Supplies	111.75	455.30	60.00	720.00	69	720.00
5 600 4	Blinds & Glass/Window Maint	264.33	1,296.04	150.00	1,800.00	85	1,800.00
5 600 5	Stove Room/Jan	100.00	100.00	50.00	200.00	50	200.00
5 610 1	Electricity	44.77	734.55	600.00	7,200.00	107	7,200.00
5 610 2	Natural Gas	633.00	6,181.90	600.00	7,200.00	114	7,200.00
5 610 3	Trash/Recycling	59.29	743.66	58.37	700.00	107	700.00
5 610 4	Water	0.00	1,311.96	0.00	500.00	135	500.00
	Subtotal Facilities	\$1,908.00	\$28,551.82	\$2,251.74	\$27,620.00	104	\$27,620.00
5 620 1	Telephone	97.85	1,386.87	83.37	1,000.00	139	1,000.00
5 620 2	Internet Connection	69.51	835.40	70.87	850.00	99	850.00
5 620 3	Copier Lease	162.06	2,016.20	162.00	2,050.00	98	2,050.00
5 620 4	Copier Maintenance	312.10	1,790.54	35.00	1,632.00	110	1,632.00
5 620 5	Equipment Repair	0.00	359.19	30.37	400.00	58	400.00
5 620 6	Software/ITek Services	0.00	738.04	62.50	750.00	108	750.00
	Subtotal Technology	\$641.90	\$7,090.82	\$345.11	\$6,682.00	106	\$6,682.00
	Facilities/Technology	\$2,609.29	\$35,642.64	\$2,799.85	\$34,302.00	104	\$34,302.00
5 700 1	Books of Order & Contributions	0.00	187.00	16.67	200.00	84	200.00
5 710 1	Misc Session Expense	0.00	912.69	20.87	250.00	165	250.00
	Session	\$0.00	\$899.69	\$37.50	\$450.00	133	\$450.00
5 800 1	Deacon's Compensation Fund	62.55	1,753.81	100.00	1,200.00	144	1,200.00
5 810 1	Special Projects	0.00	233.74	41.63	340.00	47	300.00
5 820 1	Kitchen Guild	0.00	149.78	20.87	250.00	56	250.00
	Deacons	\$62.55	\$2,106.39	\$162.50	\$1,750.00	108	\$1,950.00
	Total Budgeted Expense	\$21,954.56	\$247,886.14	\$22,306.59	\$259,278.00	96	\$259,278.00
5 900 1	Exp from General Operating Fund	0.00	0.00	0.00	0.00		0.00
	Total Operating Expense	\$21,954.56	\$247,886.14	\$22,306.59	\$259,278.00	96	\$259,278.00
5 920 2	Exp from Mission & Church Fund	495.00	-95.00	0.00	0.00		0.00
5 900 3	Exp from Building Fund	1,022.03	154,595.21	0.00	0.00		0.00
5 900 4	Exp from Endowment Fund	0.00	0.00	0.00	0.00		0.00
5 900 5	Exp from Endowment Investment	0.00	0.00	0.00	0.00		0.00
5 900 6	Exp from Endowment Reserve	0.00	0.00	0.00	0.00		0.00
5 900 7	Exp from Mission & Church Fund	3,288.99	3,288.59	0.00	0.00		0.00
5 900 8	Exp from Mission & Church Fund	500.00	1,400.00	0.00	0.00		0.00
5 900 9	Exp from Mission & Church Fund	0.00	0.00	0.00	0.00		0.00
5 901 0	Exp from Memorial Fund	0.00	237.40	0.00	0.00		0.00
5 922 2	Exp from Baseball Fund	0.00	198.58	0.00	0.00		0.00
5 922 3	Exp from Vol Ministers Fund	0.00	1,650.00	0.00	0.00		0.00
5 922 4	Ministry Organ Fund Expenses	0.00	0.00	0.00	0.00		0.00
5 935 1	Exp from Pastor's Discretionary	0.00	0.00	0.00	0.00		0.00
5 935 2	Exp from SERV Fund	0.00	0.00	0.00	0.00		0.00
5 935 3	Exp from Mission Trip Fund	51.77	2,895.00	0.00	0.00		0.00
5 935 4	Exp from Tax Rebate Fund	0.00	579.38	0.00	0.00		0.00
5 935 5	Exp from Christian Educ Fund	219.26	219.36	0.00	0.00		0.00
5 944 2	Exp from Adult Educ Fund	0.00	250.00	0.00	0.00		0.00
5 944 3	Exp from Jr Sr	0.00	0.00	0.00	0.00		0.00

Account Number	Account Name	Current Month	Year to Date	Monthly Budget	Budget Year to Date	% of Budget YTD	Annual Budget
5 944.4	Exp from VBS Fund	515.59	515.59	0.00	0.00		0.00
5 955.1	Exp from Staff Dev Fund	0.00	0.00	0.00	0.00		0.00
5 955.1	Exp from Lawn Mower Fund	0.00	297.97	0.00	0.00		0.00
5 977.1	Exp from Session Funding Fund	0.00	0.00	0.00	0.00		0.00
5 988.1	Exp from Deacons Fund	0.00	0.00	0.00	0.00		0.00
5 997.1	Exp from OUMS Fund	0.00	254.92	0.00	0.00		0.00
5 999.2	Exp from Palmfest Fund	0.00	544.00	0.00	0.00		0.00
5 999.3	Exp from Potlucking Fund	555.00	1,068.00	0.00	0.00		0.00
5 999.4	Exp from Christmas Eve Fund	556.00	1,507.00	0.00	0.00		0.00
5 999.5	Exp from Summer Eve Fund	0.00	219.77	0.00	0.00		0.00
5 999.6	Exp from Disaster Relief Fund	0.00	0.00	0.00	0.00		0.00
	Special Offerings	\$1,021.00	\$4,269.00	\$0.00	\$0.00		\$0.00
	Total Non-Budgeted Exp	\$7,614.43	\$170,475.83	\$0.00	\$0.00		\$0.00
	Total Expense	\$29,508.00	\$418,761.97	\$32,306.59	\$259,278.00	96	\$259,278.00
	Difference	\$1,433.13	(\$1,390.61)	(\$985.83)	\$122.00		\$122.00

BUILDING FUND INCOME STATEMENT

Year:	2006	2007	2008	TOTAL
Contributions	\$15,000.00	\$104,070.11	\$95,275.55	\$214,345.64
Other Income		\$4,257.85		\$4,257.85
Expenses		\$19,700.61	\$151,595.21	\$174,295.82
Yr End Bal	\$15,000.00	\$103,627.35	\$44,307.67	\$24,307.67

**BUILDING ADDITION BALANCE SHEET
December 31, 2008**

LIQUID ASSETS	
Cash	\$44,307.67
FIXED ASSETS	
Building Addition	\$120,856.31
TOTAL ASSETS:	\$165,163.98
LIABILITIES	
Draw 1 -	\$62,340.10
Draw 2 - 12/16/08	\$144,395.53
Draw 3 - 12/17/08	\$117,458.22
TOTAL LIABILITIES:	5324,193.85
NET WORTH	
Cash	\$44,307.67
Building Addition	\$96,662.46
TOTAL LIABILITIES AND NET WORTH:	\$465,163.98

**PIANO LOAN BALANCE SHEET
December 31, 2008**

ASSETS - Pianos	\$15,695.00
LIABILITY - Loan Balance	\$8,469.14
NET WORTH	\$7,225.86
TOTAL LIABILITIES AND NET WORTH:	\$15,695.00

Financial Secretary Report
Annual Report 2008

Hilliard Presbyterian Church - Hilliard, OH 43026

<u>Account Name</u>	
101 Committed Giving	\$231,713.54
102 Loose Offering	\$2,718.67
103 Initial Giving Contributions	\$306.00
104 Contributions to Per Capita	\$2,758.40
105 Contributions to Flowers	\$1,245.00
106 Contributions to LOGOS	\$349.70
107 Rental Income	\$1,300.00
108 Misc Reimbursements	\$1,184.10
109 Other Operating Income	\$1,248.46
General Fund:	\$242,823.87
133 Contr to Building Fund	\$95,025.53
144 Contr to Endowment Fund	\$95.00
148 Contr to Mission & Benevolence	\$50.00
151 Contr to Memorial Fund	\$694.00
223 Contr to Music Fund	\$250.00
333 Contr to Mission Trips	\$2,650.00
334 Tax Rebate Donation	\$750.00
441 Contr to Christian Education	\$1,000.00
442 Contr to Adult Education	\$492.20
443 Contr to JR/SR Assistance	\$173.79
444 Contr to VBS Fund	\$54.65
991 OGHS Offering	\$794.77
992 Pentecost Offering	\$560.00
993 Peacemaking Offering	\$620.00
994 Christmas Joy Offering	\$596.00
995 Souper Bowl Contributions	\$209.77
Special Offerings:	\$2,780.54
-----	-----
Total:	\$346,839.58

Hilliard Presbyterian Church Building Committee

2008 Annual Report
February 8, 2008

In 2008 the HPC building committee spent the early part of the year meeting with architect Bob Apel refining the plans for the addition and renovation. Additionally, local lending institutions as well the denominational lending office were interviewed. In April, the committee recommended and the congregation approved the mortgaging of the property with National City Bank at an amount not to exceed \$1,400,000.00.

Next came the interview and selection process for the general contractor. After interviewing 4 different contractors, O'Brien Robinson Construction Services, Inc. was selected to proceed with the addition and renovation.

Ground breaking was celebrated during Sunday morning worship on June 1, 2008. The service was held outside under the trees "in" the sanctuary. We were pleased to be able to have the first shovel of dirt turned by 6 charter members: Joann Blalock, Betty Cuniberti, Jan Domingus, Marianna McAllister, Susie Noxon and Millie Raver. The entire congregation then joined in the ground breaking with a potluck dinner.

Following a number of unexpected delays from the City of Hilliard, work began in earnest beginning in September. By the end of 2008, the exterior and interior framing was virtually complete, two of the renovated rooms were done and back in service. Every week brings new and sometimes unexpected changes and opportunities.

This report would be incomplete without a mention of how truly blessed HPC is to have hired O'Brien Robinson Construction Services to manage our project. Tom O'Brien, David Hutchinson and Ryan Hillis in particular have been total astounding. They always work with our best interests first and have gone over and above in accommodating the church's needs. When we have encountered the inevitable bumps in the road, they have smoothed them out quickly and without complaint.

We continue to work for a speedy completion of the project and look forward to worshipping with our HPC family in the new sanctuary soon.

HPC Building Committee

Greg Bohn, Karen Brown, Terry Butterworth, Jim Martin, Dave Norton, Dave Opalek, Millie Raver, Sandy Schwartz, Rev. Jim Browne, Beth Clothier, Beth Lewis, and Kim Trimboli,.

Administration Committee Report for 2008

The committee updated all job descriptions for staff and instituted a new evaluation system.

In February, we hired Joshua Brodbeck as our organist for both services.

Joyce Johnson offered to do market research for solid information on salary standards for staff for churches our size. This effort was to provide a goal for HPC to work toward in assuring that our staff was being properly compensated.

In August, we said farewell to Joshua as he moved to Bloomington, IN to attend IU. Joshua was gracious enough to recommend a new person for the organist position and in September, we hired Isaac Leaverton.

Due to the economic crisis affecting our nation, our projected income 2009 was lower than budget requests. In this, we are not alone. Many other churches around the area are cutting back on activities, programs, etc.

1. Budget cuts were necessary.
2. The costs of running and maintaining the new building are going to be higher than what we currently pay.
3. We are not able to increase the wages for our hardworking staff.
4. Money is going to be very tight this year.
5. The need for members to volunteer time is imperative.

In working to keep HPC running as smoothly as possible the following measures were taken:

1. The total dollar amount for the 2009 budget was kept at the total spent for 2008.
2. This meant total allowable dollars for each committee was reassessed and the amounts were redistributed among committees.

HPC joined the SVPUC (Scioto Valley Presbytery Utility Consortium) to work to negotiate lower utility costs. The SVPUC was able to negotiate a natural gas cost of \$0.824/ccf. This price took effect January 1, 2009. This price is available to us from IGS. This is significantly lower than the Columbia Gas rate of \$1.16995. This should produce significant savings for HPC, especially with the new addition.

In Christ,
Paula Garman, Chair
Dave Hulburt, Treasurer

Music and Worship Committee

Music and Worship Annual Report

2008

The initial 2008 members of the Music and Worship Committee were Peg and Darrel Delong, Tony Trimboli, Paula Garman, and Eve Goodwin. David Johnson and Lowell Hires co-chaired the Committee, and Rev. Browne and Beth Clothier were staff members assigned to our committee. During the course of the year Lowell Hires resigned from Session, and Tony Trimboli and Paula Garman resigned the committee to take Session appointments. Kelsey Randall, Dottie Moorhead, and Rick Garman were added to the committee during the year.

Our year was very busy and challenging, given the changing committee membership. Some highlights include:

- We hired in succession two keyboardists. We started the year with Joshua Brodbeck who provided exceptional service until he received an opportunity to further his education. In August, we interviewed and made an offer to Isaac Leaverton who is currently serving with distinction.
- The choir attended the Birmingham Choir Festival in April.
- We analyzed and discussed issues related to moving from two Sunday services to one.
- We acted on issues related to the new sanctuary, including gaining Session permission to sell the existing organ and planning for an eventual new organ.
- A new Parish Associate, Jill Rasmussen-Baker, was accepted.
- The Dubuque College Choir provided a concert in May; choir members stayed with our congregation.

The 2008 goals of this committee were carryovers from the year before. They were:

1. Encourage more participation among all members – with a goal of 70% participation in worship services.
2. Provide at least two community outreach programs
3. Increase diversity in worship service experiences with at least 8 special services

Objective 1

We worked to involve as many members as possible in various activities related to worship. The following groups or taskforces were organized by committee members:

- Acolytes – Dottie Eaton and Kim Trimboli recruited and trained youth to participate in the Sunday Morning Worship by lighting candles and ringing the bell.
- Communion – Peg Delong prepared communion elements for communion services, and signed up communion servers.
- Ushers – Darrel and Peg Delong recruited, trained, and scheduled ushers for worship services.

- Lay Readers – Tony Trimboli recruited and trained lay readers until he left the committee and was replaced by Rick Garman.
- Sanctuary Committee – Dottie Eaton chaired this committee, which is responsible for changing paraments, maintaining candles, refreshing pew supplies, preparing candles for the Christmas Eve service, and generally providing care for the sanctuary.

We estimate that approximately 178 different persons participated in our Objective One activities. Our objective was to involve 70% of the congregation. Assuming membership is approximately 215, our goal was met again this year with a participation rate of approximately 83%.

Objective 2

We participated in Carnival and helped plan an outdoor service related to groundbreaking. In addition we facilitated the Dubuque Choir visit.

Objective 3

We worked with the staff to facilitate the following special services:

- Ash Wednesday
- Maundy Thursday
- Palm Sunday
- Services during Holy Week
- Easter Sunday
- Pentecost
- Two outdoor worship services
- Reformation Sunday
- Consecration Sunday
- Christmas Eve and Christmas Day services

We also planned and implemented the following special events, studies, and activities:

- Hanging of the Greens
- Training session for new volunteers

In closing, I would like to recognize the hard work of both Joshua Brodbeck and Isaac Leaverton. I would like to thank my dedicated committee members as well as the constant support of our Director of Music, Beth Clothier, and our Pastor, Jim Browne. Without all of their hard work, the task of the Music and Worship Committee would be impossible.

Yours in Christ,

David L. Johnson – chair

Annual Report 2008

The 2008 Stewardship committee was composed of Karmel Randall and Brenda Pritchett. The committee conducted the annual stewardship campaign, including speakers, leaders' dinner, written correspondence and luncheon preparation. The committee used the Consecration Sunday stewardship program developed by Herb Miller as our framework and made small changes in the program to best fit our needs. We chose a theme of "Sowing the Seeds of Stewardship, Cultivating Stewardship and Reaping the Rewards of Stewardship" for our minutes for mission. We held the leaders' dinner before the October session meeting as a light, casual dinner to kick off the Stewardship program. We were honored to have Reverend John Stull as our speaker for the leaders' dinner and for the sermon on Consecration Sunday. The estimated campaign results were as follows:

2009 Campaign Results

88 – Estimate of Giving Cards Returned to Date

Note: 16 cards still outstanding as of Dec 31, 2008

\$228,500– Total Estimated Giving Income

Note: ~\$12,500 (5%) decrease over last year

The committee promoted the four special offerings for the year – One Great Hour of Sharing, Pentecost, Peacemaking and Christmas Joy offering. In support of mission, the Stewardship committee planned and sponsored a trip to Buckhorn Children and Family Services. We also chose Buckhorn to receive the percentages of our special offerings designated for children at risk. Adults and youth both joined our mission trip in July to Buckhorn in Chesterville, Ohio. We painted a barn and landscaped one of their entrances. We delivered quilts to the boys from our HPC quilters. They provided us with pizza for lunch and spent time talking with us about the boys and their many different situations which led them to Buckhorn. Our 2008 donations to Buckhorn include 40% from the Pentecost offering to assist children at risk and 25% from the Peacemaking offering.

In 2008, the Stewardship Committee took part in the HPC Carnival and served at the Ice Cream Social. The Stewardship committee also monitored and approved fundraising events within the church as established by the Fundraising Guidelines.

Karmel Randall
2008 Stewardship Chair

Mission and Outreach Committee

2008 Annual Report to Session

Elders: Tony Trimboli and Nancy Callison
Members: Mary Norton, Susan Osborne and Beth Lewis
Task Force members: Becky Dailey- Greeters and Diana Boyer- Marysville Reformatory

Gave more attention to Marysville Women's Reformatory Ministry

1. Bulletin board: Covered and printed signs to place on the board. Information about the Meals on Wheels program was also posted.
2. Candy box: Pressed for monthly collection- first Sunday of every month for monthly bingo (200-300 for monthly bingo nights)
3. Christmas Party: Purchase candy canes, collected travel-sized toiletries during November's soap drive to create individual gift bags as presents (400+ for Christmas party).

Visitor information

1. Revised pamphlet- should be redone for 2009- new organist, new parish associate, new building
2. Displayed guest book. The guest book was donated by Karen Talarico (Tony's mother).
3. Designed printed and framed HPC Mission Statement. It was hung by the library, but may want to move it near the entrance to the new sanctuary when it is completed. Money for frame was donated by Karen Talarico.
4. Purchased new pew pad covers (tax rebate money).
5. Purchased greeter pins (tax rebate money).
6. Purchased usher pins (tax rebate money).
7. Took over the responsibility of recruiting greeters from Worship and Music committee and wrote a job description.

Advertising

1. Entered Sunday service information on the Christian Radio station The River's church listing website. <http://www.1049theriver.com/churchlistings.html>
2. Normal weekly advertisement in the Northwest News.
3. Advertising special services in the Northwest News; Ash Wed., ground breaking, Easter and Christmas.
4. Created church letterhead
5. Tried to update the Mission web page on the church website. New software was purchased facilitate this but was placed on DCE's and pastor's computers. A request to make this program accessible to all, as well as classes to train people was discussed with technology committee but no training sessions were ever set-up.

Mission Trips and events

1. June- Project Hospitality (Staten Island, NYC) organized by Kim Trimboli, Christian Ed.

2. June-Buckhorn Youth Ranch mission, organized by Karmel Randall, Stewardship.
3. October- H.O.M.E.S (Neon, Kentucky), organized by Dave Norton
4. August-Assisted in organizing and running the 1st annual charity Golf tournament initiated by HUMC. Bill Zielenbach was HPC's representative for this event. The event generated over \$4000 dollars after expenses for the Hilliard Welfare Council, which runs the Hilliard Food Pantry as one of its programs.
5. October-Crop walk: Started recruiting walkers one month in advance and bought lunch day of walk. HPC raised \$2660 in 2008.
6. October & November- We were assigned a Mission Partner from the South Pacific through our Synod's Mission to the USA program.
 - a. Filled out application in early April and then notified that we would receive a mission partner in May.
 - b. Organized 3 classes in September to preparation for her visit. The committee worked with the Christian Ed committee to accomplish this.
 - c. Two trips to Detroit to pick-up (Oct 1st) and return (Nov 12th) our mission partner.
 - d. Establish and kept track of her schedule during her entire stay. A big THANK YOU to HPC member Margie Filichia who hosted her for the six weeks she was here.

Facilities Committee

Annual Report
2008

The 2008 members of the Facilities Committee were Todd Brown, Matt Butterworth, Neil Furr, Jim Goodwyn, Scott Long, Jim Ray and Wendy Ray. Terry Butterworth was the chair of the committee.

- Per suggestion of Tony Trimboli, a Maintenance Request form was created to give the congregation an easy way to identify areas of concern within the church building and grounds. This also provided a way for the committee to track maintenance tasks and costs.
- Completed maintenance tasks as they came in.
- We were given the task of renegotiating the service contract with Jani-King to reduce the cost of cleaning services. A new contract was in place by April.
- Faucets were replaced in the Kitchen and some plumbing updated.
- Organized a Spring clean up day for both the interior and exterior of the church. The Women's Group provided refreshments.
- Hazardous waste collected from the clean up day was taken to a designated SWACO location for proper disposal.
- Worked with insurance adjuster and various others on the water damage to the church from heavy rain. Carpets were cleaned, the roof fixed and ceiling tiles were replaced.
- Committee chair began attending the Building Committee meetings.
- The committee cleared out and later demolished the exterior storage area to make way for new construction.
- Organized a church basement clean up to remove unwanted items and make way for renovations.
- Organized moving items out of the Library and Theater rooms for renovations.
- Had the task of maintaining the Memorial Plaques reassigned to the office.
- The committee performed winterization maintenance on the mower instead of sending it out for a fee.
- Began an inventory of keys to the church building.
- Began investigating options for snow removal.
- By some fluke, the chair has become the unofficial Town Hall Meeting leader.

I want to give special thanks to the members of this committee. They are a very hard-working group and more often than not only hear about problems with the building and grounds instead of what is working well. Also special thanks to the leadership of Todd

Brown and Jim Goodwyn for training the rest of us on using the mower, lighting pilot lights, and every other quirk with the building.

HILLIARD PREBYTERIAN WOMEN 2008 ANNUAL REPORT

OUR PURPOSE

Forgiven and freed by God in Jesus Christ, and empowered by the Holy Spirit, we commit ourselves

- To nurture our Faith through prayer and Bible study
- To support the mission of the Church worldwide
- To work for justice and peace
- And to build an inclusive, caring community of women which strengthens the Presbyterian Church (U.S.A.) and witnesses to the promise of God's Kingdom

MEMBERSHIP

Membership in Presbyterian Women is open to all women. PW members are those who choose to participate in OR be supportive of Presbyterian Women in any way.

In our congregation, we offer three circles (Deborah, Diana and Priscilla) which meet monthly to provide an inclusive, caring Community of women where

- Faith is nurtured and growth takes place through worship, study, friendship and outreach
- Women are challenged to stretch beyond their limits
- Women move beyond the safe places of life and reach out to others

Our Bible Study for 2008 focused on the studies of the Old Testament books of Ruth and Jonah. Pastor Jim frequently joined our gatherings to teach, share and inspire us, for which we thank him for encouraging us to seek out and discover new ways that God works in and through us

In addition, it was an absolute joy when Maïne came to our Church. She attended Circle Meetings, helped at the Election Bake Sale and traveled with us to Newark for a PW meeting where they treated her like a rock star!

MISSIONS

2008 gave us the Blessing and opportunity to support Missions of the Church at home and worldwide. Our Projects included:

2 Cents-A-Meal Program, providing donations to the

Hilliard Food Bank	\$313.25
Amazing Grace Baptist Church	374.43
Hilliard Summer Lunch Program	283.40
Bethlehem First Community Church on Broad St	340.78
Hilliard Welfare Council	<u>281.51</u>

TOTAL \$1,593.37

We wish to sincerely thank our Congregation for the generous support of this program and thank you to the children for collecting the gifts at both services

Knit or Sew Ministry

Millie Raver has served as the coordinator for this ministry for 2 years. The program provides shawls to those who need comfort, love, hope and joy. A circle of friends meet twice a month to knit, crochet, pray and enjoy fellowship. Everyone has enjoyed the program..... including men! In addition, Kim and Betty Patch enhanced this program by knitting "Warm Woolies", providing warm wool clothing for children living in orphanages in Russia, Kazakhstan, China, Mongolia and tribal reservations in South Dakota.

In the fall of 2008, we also began 2 additional knitting ministries: "Sowing Scarves" provided crocheted and knitted scarves and hats at Christmas for the children at Amazing Grace Baptist Church. "Warm up America" was another program for involvement by the Presbyterian Women of HPC as well as members of our Congregation. 7"x 9" knitted or crocheted squares were collected for making quilts and blankets for the homeless, shelters and other non-profit agencies.

Again, thank you HPC Congregation for participating in these ventures and ministries.

ADDITIONAL MINISTRIES

With the guidance of our Lord, the generosity of the Congregation and the energy and time on behalf of the Presbyterian Women, we were blessed to provide gifts and donations to the following:

- Buckhorn Children and Family Services
- Choices (crusade against domestic violence)
- Ministry of Hope – Malawi, Africa
- Holiday Fruit Baskets to HPC shut-ins
- Afghans for graduating seniors
- Prayer shawls to Westminster Thurber Community
- 68 cards of care and concern mailed during the year
- Courage House (women's recovery center) Newark, Ohio

GATHERINGS

Members of PW at HPC traveled to Ohio Presbyterian Churches in Athens, Newark, Reynoldsburg and Upper Arlington to celebrate the Missions of the Church worldwide and to enjoy fellowship, worship, and each other.

OPPORTUNITIES

- Cake raffle at summer HPC carnival
- Garage and bake sale in May
- Bake sale – November election
- Purchased centerpiece for funeral luncheon
- Purchased lace tablecloths, chafing dishes, ½ pans and serving pieces for HPC functions
- Sold Panera Bread coupons
- Fulfilled commitments to Presbyterian Women of the Presbyterian Church (U.S.A.)
 - Least Coin \$30.00
 - Thank Offering \$374.50
 - Annual Pledge \$400.00

2008 COORDINATING TEAM

Moderator – Sandy Fox Secretary – Millie Raver
Treasurer – Evelyn Entler Program – Ginny Wholf
Missions & Local Service – Karen Wholf
Diana Circle – Betty Parrh Deborah Circle – Betty Cariberti
Priscilla Circle – Joann Blalock

Respectfully submitted:

Sandy Fox - Moderator

HPC Board of Deacons
Annual Report 2008

2008 Board of Deacons

Betty Affeldt	Faith Parish
Peg Delong	Love Parish
Eve Goodwyn	Joy Parish
Teresa Johnson	Grace Parish
Beth Lewis	Humility Parish
Millie Raver	Patience Parish

Officers

Moderator	Peg Delong
Vice-moderator/Secretary	Millie Raver

The Board of Deacons is responsible for ministering to those in need, the sick, the friendless and any that may be in distress, in accordance with the Scriptures. (Acts 6:11 and Timothy 3: 8-13). Our Mission is to care for the members of Hilliard Presbyterian Church and members of our community with love and compassion. Our goal is to help others experience God's love in tangible, meaningful ways as well as intangible, spiritual ways.

Specific responsibilities approved by Session

1. Provide a ministry of compassion
2. Maintain a parish plan- for fellowship and communication
3. Administer Deacon's Fund
4. Provide community building activities
5. Assist with Communion when asked
6. Oversee the Prayer Chain, Meals of Wheels and the Kitchen Guild

HPC Deacons are required to attend monthly meetings and support their assigned parishes. The phone tree is one source the Deacons use to communicate important information to our congregation. The Deacons also maintain contact with the members of their parishes through special occasion cards, visits, flowers, face -to-face conversations and phone calls. With six Deacons and large parishes, communication between Pastor, church staff, Elders, Deacons and all of our congregation is essential for the Deacons to carry out our Ministry of Compassion.

This year the Deacons have

1. Organized a Game Night to benefit the Hilliard Summer Lunch Program
2. Helped organize a potluck to celebrate the Ground Breaking of our expansion
3. Helped with the ice cream social
4. Helped with the outside Carnival
5. Helped organize the Leadership Picnic
6. Organized the farewell potluck for Maine as she returned to the Cook Islands

7. Attended two Retreats with the Elders

2008 presented many challenges and opportunities for the Deacons, and hopefully we managed to serve our congregation with love and compassion. We thank all the Deacons for their hard work and dedication, and say a fond farewell to outgoing Deacons Millie Raver and Peg Delong.

Respectfully submitted,
Peg Delong, Moderator 2008

TOTAL BUDGETED INCOME	\$244,650
TOTAL BUDGETED EXPENSES	\$244,650
SURPLUS/(DEFICIT)	

BUDGETED EXPENSES:

5.10.01	Stewardship Materials	\$600
5.11.01	Endowment Committee	
STEWARDSHIP EXPENSES		\$600

5.20.01	Pulpit Supply	\$750
5.20.02	Organ Supply	\$450
5.20.03	Musicians	\$250
5.21.01	Flowers	\$900
5.22.01	Sheet Music	\$200
5.22.02	Supplies	\$300
5.23.01	Instrument Maintenance	\$750
5.23.02	Robe Maintenance	
5.24.01	Wedding/Funeral Organist/Choir Dir	
5.25.01	Piano Loan Interest	\$525
5.25.02	Piano Loan Principal	\$4,075
WORSHIP EXPENSES		\$8,200

5.30.01	Denominational Benevolence	\$900
5.30.03	Local Mission	\$50
5.30.04	CROP Walk	
5.32.01	Advertising	\$1,250
5.32.02	Upper Room	\$225
5.33.01	Mission Trips	\$300
5.33.02	Special Events	\$75
5.34.01	Quilts	\$25
MISSION OUTREACH EXP		\$2,825

5.40.01	Church School Curricula	\$850
5.40.41	Expansitures from CE Fund	\$100
5.41.01	WOW	\$1,500
5.41.02	Youth Ministries	\$1,250
5.42.01	Vacation Bible School	
5.43.01	General Supplies	\$600
5.43.02	Committee Expense (Checks, CPR)	\$400
5.44.01	Teacher & Student Recognition	\$300
5.45.01	Camperships	
5.45.02	Leadership Training	
5.46.01	Carnival	
CHRISTIAN EDUCATION EXP		\$5,000

5.50.01	Pastor Base Salary	\$29,448
5.50.02	Housing Allowance - Pastor	\$30,000
5.50.03	Pension/Medical - Pastor	\$18,726
5.50.04	Travel Allowance - Pastor	\$1,800
5.50.05	Continuing Education - Pastor	\$1,500
5.50.06	Professional Expenses - Pastor	\$1,200
5.51.01	Director of Christian Education	\$52,856
5.51.04	Expense Reimbursement - DCE	\$900
5.52.01	Director of Music	\$14,208
5.52.05	Expense Reimbursement - DOM	\$200
5.52.06	Organist	\$12,000
5.53.01	Office Manager	\$15,288
5.54.01	Child Care Workers	\$6,500
5.55.01	Temporary Employees	
5.55.02	Staff continuing education	
5.55.03	Staff Development	
5.55.04	Non-employee Compensation	\$300
5.56.01	Per Capita	\$7,162
5.57.01	Employment Taxes	\$6,185
5.57.02	Worker's Compensation	\$760
5.58.01	Insurance	\$4,300
5.58.02	Business Services	\$75
5.59.01	Bank Charges	\$267
5.59.02	Office Supplies	\$1,450
5.59.03	Postal Services	\$1,750
5.59.04	Committee Expenses	
ADMINISTRATION EXPENSES		\$186,875

5.60.01	Janitorial Services	\$7,000
5.60.02	Service Contracts	\$1,800
5.60.03	Custodial Supplies	\$550
5.60.04	Buildings & Grounds Maintenance	\$1,400
5.60.05	Snow Removal	\$500
5.61.01	Electricity	\$10,000
5.61.02	Natural Gas	\$10,000
5.61.03	Refuse Removal	\$780
5.61.06	Water	\$1,200
5.62.03	Telephone	\$1,200
5.62.04	Internet Connection	\$840
5.63.03	Copier Lease	\$2,000
5.63.04	Copier Maintenance	\$1,690
5.63.05	Equipment Repair	\$250
5.63.06	Software/Web Services	\$500
FACILITY/TECHNOLOGY EXP		\$39,450

1/8/2009 11:57 AM

5.70.01	Books of Order & Confessions	\$200
5.71.01	Miscellaneous Session Expense	
SESSION EXPENSES		\$200

5.80.01	Deacon's Compassion Fund	\$1,200
5.81.01	Special Projects	\$200
5.82.01	Kitchen Guild	\$100
DEACONS EXPENSES		\$1,500

TOTAL BUDGETED EXPENSES \$244,650

BUDGETED INCOME:

4.01.00	Estimate of Giving	\$182,692
4.01.01	Other Envelope Giving	\$45,808
4.01.02	Loose Offering	\$2,800
4.01.03	Initial Giving Contributions	\$300
4.01.04	Contributions to Per Capita	\$3,400
4.01.05	Contributions to Flowers	\$1,350
4.01.06	Contributions to LOGOS	\$400
4.01.07	Rental Income	\$3,350
4.01.08	Miscellaneous Reimbursements	\$1,350
4.01.09	Other Operating Income	\$1,500
4.01.11	Bank Account Interest	\$1,500
TOTAL BUDGETED INCOME		\$244,650

1/8/2009 11:58 AM

Changes in Terms of Call

'Terms of call' are the terms under which a pastor serves a congregation. These are first set when the pastor comes to serve the congregation. Three parties must agree to these terms, the pastor, the congregation, and the presbytery. Only the congregation can change these terms. The session is responsible for all the finances of the congregation and takes action to give raises to other employees. They recommend changes to the terms of call to the congregational meeting.

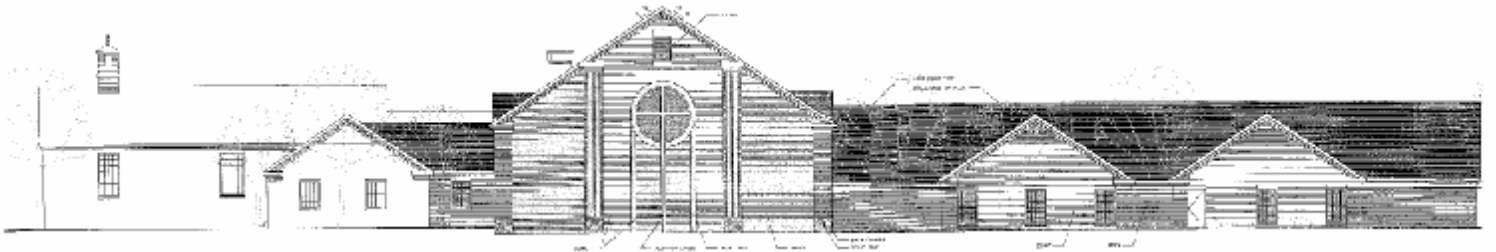
<u>Terms of Call</u>	<u>[no change from 2008]</u>	<u>Proposed</u>
Salary		29,432.00
Housing Allowance		30,000.00
Pension/Medical		18,721.00
Travel		2,000.00
Continuing Education		2,200.00
Professional expenses		2,000.00

Notes:

1. Salary and Housing together are what is called 'effective salary'.
2. Pension/Medical is not money received by the pastor, it is a cost of having a pastor. This amount is fixed by the denomination at a % of the effective salary. A portion of this goes to fund the pastor's pension, the rest goes to provide major medical coverage.
3. Travel, Continuing Education, and Professional Expenses are line items which are paid out only on a reimbursement basis. After the funds are spent and receipts provided the amounts can be paid.
4. Travel is nearly all car miles and is paid at the IRS defined rate.
5. Professional Expenses include books and professional journals, robes, and stoles.

2008 ANNUAL REPORT

Hilliard Presbyterian Church
3600 Leap Road
PO Box 63
Hilliard, Ohio 43026
Phone: 614-876-7121
Fax: 876-8951
Website: www.hilliardpres.org



Prepared for the Annual Meeting of the congregation to be held on February 8, 2009

Table of Contents

Docket for Annual Meeting	3
Elders/Board of Deacons/Nominating Committee/Staff	4
Clerk of Session's Report	5
Congregational Meeting Minutes	8
Staff Reports	
Pastor	10
Director of Christian Education	11
Director of Music	12
Financial Reports	
Treasurer	13
Financial Secretary	19
Congregational Committee Reports	
Building Committee	20
Session Committee Reports	
Administration	21
Music and Worship	22
Stewardship	24
Mission and Outreach	25
Facilities	27
Reports for Boards and Organizations	
Presbyterian Women	29
Deacons	32
2009 Budget	34
Change in Pastor's Terms of Call	36

Docket

Annual Meeting of the Congregation
Hilliard Presbyterian Church
February 8, 2009

Call to Order and Opening Prayer

Acknowledgement of Clerk
Establishment of Forum

Discussion and Reception of 2008 Annual Report

2008 Budget
Presentation
Discussion

Other Business
Approval of changes in terms of call

Closing Prayer

Your attention is drawn to paragraph of G-7.0304 of the book of Order which limits the sort of business which can be enacted at Congregational Meetings.

G-7.0304

A. Business to be transacted at meetings of the congregation shall include the following:

- 1. matters relating to the electing of elders, deacons and trustees;*
- 2. matters related to the calling of a pastor or pastors:*
- 3. matters related to the pastoral relationship*
- 4. matters related to buying, mortgaging, or selling real property*
- 5. matters related to the permissive powers of a congregation, such as the desire to lodge all administrative responsibility in the session, or the request to presbytery for exemption from one or more of e requirements because of limited size.*

B. Business at congregational meetings shall be limited to the forgoing matters {1} through {5}. Whenever permitted by civil law, both ecclesiastical and corporate business may be conducted at the same congregational meeting.

Session and Board of Deacons

Pastor: Jim Browne

Session

Clerk: Dave Norton

Class of 2009

Tony Trimboli
Greg Bohn
Nancy Callison
Terry Butterworth

Class of 2010

Paula Garman
Earl Osborne
Karen Brown
Doug Browne

Class of 2011

Melanie Martin
Dottie Eaton
Ed Hall
Mary Norton

Board of Deacons

Class of 2009

Betty Affeldt
Beth Lewis

Class 2010

Eve Goodwyn
Teresa Johnson

Class of 2011

Lisa Browne
Jim Ray

Hilliard Presbyterian Church Staff

Pastor
Parrish Associate
Director of Christian Education
Director of Music
Organist
Treasurer
Office Manager
Nursery Supervisors

Jim Browne
Jill Rasmussen-Baker
Kim Trimboli
Beth Clothier
Isaac Leaverton
Dave Hulburt
Beth Lewis
Charlie Ryan
Dani Ryan

Nominating Committee

Dottie Eaton – Elder and chair
Nancy Callison-Elder
Betty Affeldt-Board of Deacons

CLERK OF SESSION'S ANNUAL REPORT

February 9, 2009

The Clerk of Session is responsible for preparing the monthly statistical report, taking and distributing minutes of Session meetings, serving as Secretary for Congregational meetings, receiving and sending directed communications, overseeing the records of the church, presenting the permanent record for annual Presbytery review, preparing specific reports to the General Assembly and Presbytery and serving as a link between HPC and Presbytery.

Session Meetings

The Session held a regular stated meeting every month, generally on the second Thursday of the month. In addition, the following special meetings here held:

May 4 To receive new members.
July 21 To receive new members.
October 5 To receive new members.
December 1 To discuss the 2009 budget.
December 18 To examine and set ordination and installation of newly elected officers.

Congregational Meetings

There were three Congregational Meetings during the year:

February 10 To receive the 2007 Annual Report, approve changes to the Pastor's Terms of Call, and receive the 2007 budget.
April 27 To approve the securing of a mortgage not to exceed 1.4 million dollars from National City Bank.
November 16 To elect Elders, Deacons and Congregational members to the Church nominating committee and the endowment committee.

Church Committees and Chairpersons

Administration	Paula Garman
Christian Education	Greg Bohn
Facilities	Terry Butterworth
Mission/Outreach	Tony Trimboli
Worship	Dave Johnson
Stewardship	Karmel Randall
Technology	Doug Browne
Nominating	Doug Browne

Persons Hired by the Session

Director of Christian Education	Kimberly Trimboli
Director of Music	Beth Clothier
Church Office Manager	Beth Lewis
Church Treasurer	Dave Hulburt
Financial Secretary	Beth Lewis
Organist	Isaac Leaverton & Joshua Broadbeck
Nursery Supervisor	Charley Ryan and Dani Ryan

Membership

Hilliard Presbyterian Church began 2008 with an active membership of 215. Three new member classes and brought 7 new members to HPC. There were twenty-two members removed from the rolls during the course of the year, leaving an ending active membership of 200.

Session Actions

Session has over view of all church programs and ultimate approval of all church activities. Session receives new member, approves person hired to non-clergy staff and appointed program positions, approves Communion dates and Baptisms, and approves the budget and any revisions to the budget.

In addition, the following Session actions are of interest and generally are in chronological order for the year:

- Elected David Hulburt as Treasurer and Beth Lewis as Financial Secretary for 2008.
- Accepted the resignation of Rev. Eleanor Cherryholmes as Parish Associate.
- Approved HPC participation in the summer lunch program.
- Approved applying with Synod to host a church leader from the South Pacific for 6 weeks.
- Approved the hiring of Joshua Broadbeck as organist.
- Approved the establishment of the "Tithe" fund and request the congregation tithe their Federal Government Rebate checks.
- Approved holding a ground breaking worship service on June 1, 2008.
- Approved Dave Norton and Dave Opalek to sign all necessary documents for the current building program.
- Approved the resignation of Joshua Broadbeck as organist.
- Granted the Worship and Music committee permission to sell the current organ with the understanding that it will not be removed prior to the completion of the new sanctuary.
- Approved the hiring of Isaac Leaverton as organist.
- Approved the recommendation of the Pastor to enter into a Parish Associate relationship with Rev. Jill Rasmussen-Baker.
- Approved entering into an agreement with the Hilliard YMCA for a 2009 summer program.
- Decided to continue with two worship services each Sunday.
- Approved the 2009 budget.

Respectfully submitted,

David Norton
Clerk of Session

[Annual Congregational Meeting](#)

Hilliard Presbyterian Church
February 10, 2008

The meeting was held in the sanctuary immediately following the 11:00 worship service. Moderator: Rev. Jim Browne.

The Moderator opened the meeting with prayer. The moderator appointed David Norton, Clerk of Session as Secretary of the meeting.

The Secretary stated the meeting had been properly called and that a quorum was present.

The session presented the Annual Report. Following discussion, the Congregation **voted** to receive the Annual Report.

The 2008 budget was presented to the congregation. Following discussion, the congregation **voted** to receive the 2008 HPC Budget.

Elder Paula Garman, Chair of the Administration Committee, presented proposed changes in the Terms of Call of Rev. Jim Browne:

- Salary increase from \$29,380 to \$29,432.
- Housing allowance increase from \$28,860 to \$30,000.
- Pension/Medical benefits increase from \$18,346 to \$18,721.
- Travel allowance decrease from \$2,600 to \$2,000.
- Continuing education increase from \$1,600 to \$2,200.
- Professional expense decrease from \$2,800 to \$2,000.

Other portions of the terms of call to remain the same including vacation and study leave.

The congregation **voted** to approve the changes in the terms of call of Rev. Jim Browne.

There being no other business to come before the meeting, the Moderator closed the meeting with prayer.

Respectfully submitted,

Rev. Jim Browne
Moderator

David Norton
Secretary

Called Congregational Meeting
Hilliard Presbyterian Church
April 27, 2008

The call of the meeting was to gain congregational approval of securing a mortgage not to exceed \$1.4 million dollars from National City Bank, the way being clear.

The meeting was held in the sanctuary immediately following the 11:00 AM worship service. Rev. Jim Browne, Moderator. The Moderator opened the meeting with prayer. The Moderator appointed Dave Norton, Clerk of Session as Secretary for this meeting. The secretary stated that the meeting had been properly called and that a quorum was present.

Dave Norton, Chair of the Building Committee and representing the Building Committee **moved** that the congregation of Hilliard Presbyterian Church grant Session the authority to secure a mortgage on our property in an amount not to exceed \$1.4 million dollars, the way being clear (Presbytery approval is still pending).

Following a period of questions and answers and prior to the vote, a request was made to vote using paper ballots. Upon general consent of those present for the use of paper ballots, the Moderator appointed Harold Doust, Cindy Cummins and Barb Cesta as Tellers for the purpose of tabulating the vote.

Teller Harold Doust presented the Moderator with the results of the voting and **motion was approved**.

There being no other business to come before the meeting, it was moved, seconded and approved to adjourn the meeting.

The Moderator adjourned the meeting with prayer.

Respectfully submitted,

Rev. Jim Browne
Moderator

David Norton
Secretary

Called Congregational Meeting
Hilliard Presbyterian Church
November 16, 2008

The meeting was held in the sanctuary following worship. The Moderator Rev. Jim Browne, opened the meeting with prayer.

The moderator appointed clerk of session David Norton secretary of the meeting. The secretary stated that the meeting was properly called and that a quorum was present.

The call of the meeting was to hear and act on the report of the nominating committee.

Elder Doug Browne, chairman of the nominating committee presented Tony Trimboli to fill an unexpired term for the office of Elder for the class of 2009 and Earl Osborne to fill an unexpired term for the office of Elder for the class of 2010. Following a call for nominations from the floor, the congregation **voted** to close the nominations and elect the nominees to the office of Elder.

Elder Doug Browne, chairman of the nominating committee presented Mary Norton, Dottie Eaton, Ed Hall and Melanie Martin for the office of Elder for the class of 2011. Following a call for nominations from the floor, the congregation **voted** to close the nominations and elect the nominees to the office of Elder.

Elder Doug Browne, chairman of the nominating committee presented Lisa Browne and Jim Ray for the office of Deacon for the class of 2011. Following a call for nominations from the floor, the congregation **voted** to close the nominations and elect the nominee to the office of Deacon.

Elder Doug Browne, chairman of the nominating committee presented Matt Butterworth, Becky Dailey, Harold Doust and Arlene Martin to serve on the Congregational Nominating Committee for 2009. Following a call for nominations from the floor, the congregation **voted** to close the nominations and elected the nominees to serve on the Congregational Nominating Committee.

Elder Doug Browne, chairman of the nominating committee presented Millie Raver to serve on the Endowment Committee for the class of 2011. Following a call for nominations from the floor, the congregation **voted** to close the nominations and elect the nominee to serve on the Endowment Committee.

There being no other business to come before the meeting, the congregation **voted** to adjourn the meeting.

The Moderator closed the meeting with prayer.

Respectfully submitted,

Rev. Jim Browne, Moderator

David Norton, Secretary

Year End Report
Pastor Jim Browne
Hilliard Presbyterian Church 2008

The year 2008 is the tenth year I have been privileged to serve as Pastor of Hilliard Presbyterian Church. In many ways it feels as though I have been pastor here for a very long time, and in other ways I realize how much I still can learn about this place.

As I look back several times are clear; I look back to a sabbatical time, to moderating the presbytery, to working on the General Assembly held here in Columbus. I think back to the number of times I have stood with one of you at the funeral of one you loved, the times I have seen a tear fill many eyes as we pause for baptism, times I have served you communion, and times we have shared the ashes of remembrance on Ash Wednesday. We have gone on Mission trips, I love those memories I share with many of you.

Worship is always important to our life together and I think of memorable services we have shared. Christmas Eve services, and Easter, the living Upper Room presentation and both early morning and late afternoon services during various Holy Weeks. I rejoice at the great number of you who have served as lay leaders in worship, those who serve communion, those who plan worship.

I give thanks for the number of you who have persevered and taken the long *Disciple* studies, as well as the shorter ones. *Breakfast with the Bible* and the *Nooma* videos are all educational memories that make this decade of my life memorable.

One of the great blessings of working here has been the amazing people God has called to serve here with me. Parish Associates Eleanor, Neil and Jill, Staff colleagues Sandy, Beth, Kim and Beth, strong congregational leaders too many to mention. I truly believe that ministry should be a shared venture, and I am grateful that you have often shared the journey with me.

This year in particular is one which I will remember for our beginning the building phase of our addition/renovation. It is surely not the beginning, we have been praying and dreaming about it for years, but it was the visible beginning. There is work yet to be done, there is much to finish. But 2008 gave us the beginning of actually building. Dave Norton's strong leadership here is very appreciated.

God is good. The work we are called to is do-able with God's help. The physical setting is nice and soon to be wonderful. The staff and leaders with whom I work are a blessing.

Pastorally,

Jim Browne

Annual Report 2008
Director of Christian Education

In the first part of this year in Sunday School, all ages continued to learn about different themes from the Joseph story through our year of Jubilee. This included themes such as family relationships, prayer, and forgiveness. We found that the Breakfast with the Bible programs were well received. When the Jubilee program ended we continued with these intergenerational mornings once a month which allow us to fellowship and study as the whole family with all ages present. Adults also indicated their appreciation of the Nooma videos by Rob Bell, and so we have continued a regular offering of these studies on Sunday mornings for adults and youth.

Our youth program is a small but very loyal group. They are meeting regularly with a deliberate balance of study, fellowship and service. Three students also began meeting on Sunday evenings this fall as a part of the 2009 Confirmation Class.

The Word On Wednesday Program continued through the winter and early spring learning about creation, shepherds and caring for others. This fall the group enjoyed the presence and participation of Maine, our visiting Mission Partner. The children are spending the '08 – '09 year learning about the parts of the worship service and how to participate effectively in worship, which is also the topic of their Sunday School classes. The children regularly invite friends to participate in WOW, and Wednesdays are a very busy evening.

This summer, in place of VBS, we continued with Church Family Faith Nights. Church Family Faith Nights were held once a month, and included opportunities for members of our church family to consider worship as an important part of our lives. I hope that these events were useful to those who participated, and will continue to contribute to the faith development of all of our members.

I was pleased to be able to lead a group of youth and adults to Staten Island New York for Project Hospitality mission project. While in New York we worked in food pantries, soup kitchens, and other tasks to assist the Project in helping the poor in their area. We also had the opportunity to learn about causes of poverty and the continuing impact of HIV / AIDS in our country.

I continued in my second year of writing curriculum for the national Presbyterian curriculum "We Believe Workshop". I also began a part time Seminary education at the Methodist Theological School in Ohio by taking a class titled Introduction to Christian Theology. This has been part of the process of beginning my pursuit of the call to the ordained ministry. I appreciate the congregation's support as I have been involved in these endeavors.

While construction has raised many challenges in changing rooms and moving supplies, the Christian Education participants (and I!) have enjoyed the opportunity to have temporary walls to use as mural spaces and educational tools!

Sincerely,

Kim Trimboli

Director of Music Annual Report 2008

We have had two talented organists with us during 2008. Joshua Brodbeck joined us in January and left in August to go to Indiana University to study with his organ professor Todd Wilson at the school of music. Isaac Leaverton, now a sophomore Music Education major at Capital University has been with us since September 2008. Betsy Ward ended her time with us after spending a year working with the children's choir, starting a Youth Choir (the Minor Thirds) and working also with the Chancel Choir.

Betsy Ward and I were delighted to have the choirs of HPC assist us in completing our comprehensive juries which are a requirement for the MACM degrees we are both seeking at Trinity Lutheran Seminary. Betsy moved home at the end of the fall semester to finalize the plans for her marriage to Stephen Friedrich, they were married on January 10, 2009. In addition to an MACM degree, I am also seeking an MDiv. This will add two years to my time at seminary.

Several choir members traveled to Michigan to attend a weekend choir and music workshop. We stayed and sang for worship under the direction of Tom Trenney.

As we have watched new space being built at HPC, the choirs are excited about a new choir room, new worship space and all that goes with it. To compliment the new space, we will be purchasing a new organ. The organ committee began its work mid-year 2008 and continues under the chairmanship of Brad Patch. This is truly an exciting time for HPC!

I am grateful to all of the members of the HPC Chancel Choir, the Circle of Fifths, the Chime Choir, the Minor Thirds and the children's choir who gave of their time and talent to provide beautiful music that enhances our worship services.

Thank you to all who support the music programs in all ways, and a special thank you to members of the Music and Worship committee for handling all the behind the scenes work that is necessary for our worship services and music programs.

Respectfully Submitted,

Elizabeth (Beth) Clothier
Director of Music

Treasurer's Annual Report
2008

Hilliard Presbyterian Church - Hilliard, OH 43025
Balance Sheet as of December 31, 2008

Page 1

Account #	Account Name	Reporting Balance	Year to Date
Assets			
10101	Campaigns Checking	126,448.74	71,052.79
10102	Campaigns Savings Acct	2,245.68	0.00
10103	Cash Pending Deposit	749.10	0.00
10111	National City Checking	0.00	10,075.09
10112	National City Money Market	0.00	20,437.75
10201	Champaigne Savings Checking	754.46	0.00
10401	New Covenant Bldg Growth Fd	12,496.65	8,767.87
10402	New Covenant Bldg Income Fd	13,569.87	10,451.15
10403	New Covenant Money Market	0.00	2,048.43
10812	Petty Cash	110.72	110.72
	Total Assets	<u>\$156,773.33</u>	<u>\$85,527.73</u>
Liabilities and Fund Balances			
23001	Retired Loans Payable	182.24	166.76
23002	PCA Taxes Payable	759.64	780.68
23005	Medicare Taxes Payable	177.48	182.56
24001	Workers Comp Payable	273.92	271.42
25001	State Taxes Payable	356.92	311.34
26001	City Taxes Payable	424.13	444.28
	Total Liabilities	<u>\$2,276.03</u>	<u>\$2,416.04</u>
30101	Unexp'd Operating Budget	1,552.87	115.13
30201	Major, Major & Exp Imppr	8,275.86	7,780.96
30301	Building Fund	102,627.25	31,307.67
30401	Endowment Fund-Cash	29.00	215.00
30402	Endowment Investment	24,178.39	24,178.39
30403	Endowment Inv Return	339.24	1,661.95
30404	Endowment Invest Growth	1,132.20	(6,523.65)
	Subtotal Endowment Investment	<u>\$26,169.83</u>	<u>\$19,214.09</u>
	Total Endowment Fund	<u>\$26,189.83</u>	<u>\$19,329.09</u>
30411	Mission & Development Fund	2,359.78	3,009.78
30421	Church Development Fund	89.00	89.00
30212	Manorial Fund	404.00	404.00
30222	Hazell Fund	2,176.99	1,978.41
30303	Volunteer Mission Training Fd	3,823.65	2,238.55
30302	S.E.R.V. Fund	862.81	282.81
30303	Mission Trip Fund	50.00	0.00
30304	Gas Rebate Fund	0.00	3,062.64
30405	Christian Education Fund	0.00	680.64
30406	Adult Education Fund	285.22	378.22
30407	Trust Assistance Fund	516.32	498.22
30408	Youth & Bible School Fund	210.31	1,285.57
30501	Staff Development Fund	250.00	250.00
30601	Lawa Redeem Fund	1,111.51	513.54
30991	Older Adult Home Fund	50.15	0.00
30992	Pentecost Fund	12.50	3.00
30993	Pentecost Fund	62.00	155.00
30994	Joy Offering Fund	951.00	0.00
	Total Fund Balance	<u>\$154,502.30</u>	<u>\$83,111.69</u>
	Total Liabilities and Fund Balances	<u>\$156,773.33</u>	<u>\$85,527.73</u>

Account Number	Account Name	Current Month	Year to Date	Monthly Enc 2008	YTD Year to Date	% of Budget YTD	Annual Budget
Income							
4010 0	Estimate of Giving	10,437.38	182,928.74	15,365.63	184,400.00	59	184,400.00
4010 1	QDA Envelope Giving	4,548.00	48,780.00	4,950.00	50,400.00	83	59,400.00
	Envelope Giving	\$24,935.38	\$231,408.74	\$20,316.63	\$234,800.00	95	\$243,800.00
4010 2	Letter Offering	519.11	2,713.67	238.37	2,500.00	100	2,500.00
4010 3	Letter Giving Contrib	0.00	306.00	0.00	300.00	87	350.00
4010 4	Cont. to Per Capita	0.00	2,683.20	0.00	3,200.00	81	3,200.00
4010 5	Cont. to Flowers	80.00	1,245.00	144.63	1,700.00	73	1,700.00
4010 6	Cont. to L O GDS	0.00	349.70	41.60	500.00	71	500.00
4010 7	Racial Income	100.00	1,300.00	62.50	950.00	173	750.00
4010 8	Misc Reimbursements	31.00	1,194.10	75.00	900.00	132	900.00
4010 9	Other Operating Income	15.50	1,328.45	350.00	4,200.00	32	4,200.00
4011 1	Bank Accounts Interest	109.29	3,088.55	125.00	1,500.00	207	1,500.00
	Non-Envelope Oper Income	\$674.90	\$14,228.69	\$1,004.13	\$15,600.00	91	\$15,600.00
	Total Budgeted Oper Income	\$24,710.28	\$246,632.43	\$21,320.76	\$250,400.00	95	\$259,400.00
4012 0	Unpaid BDO	0.00	0.00	0.00	0.00		0.00
4012 1	Price Year BDO	0.00	0.00	0.00	0.00		0.00
4012 2	Transfer to Operating	0.00	614.97	0.00	0.00		0.00
4012 3	Adjustments to Income	0.00	0.00	0.00	0.00		0.00
	Nonbudgeted Oper Income	\$0.00	\$614.97	\$0.00	\$0.00		\$0.00
	Total Operating Income	\$24,710.28	\$246,247.40	\$21,320.76	\$250,400.00	95	\$259,400.00
4020 2	Cont. Major Account & Exp. Imp.	0.00	3.00	0.00	0.00		0.00
4020 3	Maint. & Cap Exp. Interest	0.00	0.00	0.00	0.00		0.00
4020 4	Transfer to Maint. & Cap Imp.	0.00	0.00	0.00	0.00		0.00
4020 5	Cont. to Building Fund	5,064.02	95,275.53	0.00	0.00		0.00
4040 4	Cont. to Endowment Fund	0.00	95.00	0.00	0.00		0.00
4040 6	Endowment Income Reinvest	383.02	722.09	0.00	0.00		0.00
4040 7	Equity Invest Gain/Loss	0.00	(1,178.81)	0.00	0.00		0.00
4040 8	Cont. to Mission & Benevolence	50.00	50.00	0.00	0.00		0.00
4040 9	Cont. to HPC Development	0.00	0.00	0.00	0.00		0.00
4051 0	Contrib. Memorial Fund	105.00	604.00	0.00	0.00		0.00
4082 2	Cont. to Memorial Fund	0.00	0.00	0.00	0.00		0.00
4082 3	Cont. to Vol. Musician Fed.	0.00	250.00	0.00	0.00		0.00
4082 4	Secretary's Opera Contributions	0.00	0.00	0.00	0.00		0.00
4303 1	Pastor's Disc. Allowance Fund	0.00	0.00	0.00	0.00		0.00
4303 2	Cont. to SERV. Fund	0.00	0.00	0.00	0.00		0.00
4303 3	Cont. to Mission Trips	0.00	2,875.00	0.00	0.00		0.00
4303 4	Exp. Release Donation	0.00	680.00	0.00	0.00		0.00
4404 1	Cont. to Christian Education	0.00	1,000.00	0.00	0.00		0.00
4404 2	Cont. to Adult Ed. Fund	40.00	493.20	0.00	0.00		0.00
4404 3	Cont. to JHS Assist. Fund	173.79	173.79	0.00	0.00		0.00
4404 4	Cont. to VBS Fund	0.00	54.55	0.00	0.00		0.00
4404 5	Cont. to STEW Development	0.00	0.00	0.00	0.00		0.00
4406 1	Cont. to Lassa Mowea Fund	0.00	0.00	0.00	0.00		0.00
4407 1	Session Offering, Action Fund	0.00	0.00	0.00	0.00		0.00
4408 1	Cont. to Treas. Fund	0.00	0.00	0.00	0.00		0.00
4499 1	OWBS Offering	0.00	794.77	0.00	0.00		0.00
4499 2	Pentecost Offering	0.00	359.00	0.00	0.00		0.00
4499 3	Pres. Making Offering	0.00	629.00	0.00	0.00		0.00
4499 4	Christmas Joy Offering	555.30	555.00	0.00	0.00		0.00
4499 5	Supper Bowl Contributions	0.00	209.77	0.00	0.00		0.00
4499 6	Disaster Relief Contributions	0.00	0.00	0.00	0.00		0.00
	Total Special Offerings	\$556.00	\$2,740.54	\$0.00	\$0.00		\$0.00
	Total Non-Operating Income	\$6,271.83	\$100,721.96	\$0.00	\$0.00		\$0.00
	Total Income	\$30,982.11	\$346,971.36	\$21,320.76	\$250,400.00	95	\$259,400.00

Hilliard Presbyterian Church - Hilliard, OH 43026
 Treasurer's Report for January, 2008 through December, 2008

01/04/09

Page 3

Account Number	Account Name	Chrged Month	Year-to Date	Monthly Budget	Budget Year to Date	% of Budget YTD	Annual Budget
Stewardship							
5 100 J	Stewardship	202.58	1,452.94	0.00	1,350.00	83	1,750.00
5 110 I	Endowment Committee	0.00	0.00	20.87	230.00	0	230.00
	Stewardship	202.58	1,452.94	20.87	1,580.00	73	\$2,000.00
5 200 I	Copy Supply	125.00	725.00	75.00	900.00	81	900.00
5 200 2	Office Supply	0.00	1,650.00	83.37	1,000.00	165	1,000.00
5 200 3	Ministry	0.00	560.00	62.50	750.00	25	750.00
5 210 I	Flowers	205.00	2,185.00	166.63	2,000.00	169	2,000.00
5 220 I	Church Home	193.02	1,728.40	62.50	750.00	184	750.00
5 230 2	Snippets	41.23	325.02	62.50	750.00	70	750.00
5 230 1	Instrument Main Access	0.00	450.00	134.11	1,250.00	60	1,250.00
5 230 2	Rite Maintenance	0.00	0.00	25.00	300.00	0	300.00
5 240 I	Wedding/Funeral Organ/Choir	75.00	75.00	41.63	500.00	15	500.00
5 250 7	Fixed Line Internet	56.50	830.00	69.52	835.00	99	835.00
5 250 2	Fixed Line Principal	128.66	3,756.67	313.75	3,765.00	100	3,765.00
	Worship	51,411.73	512,269.88	51,066.63	512,800.00	96	\$12,800.00
5 300 1	Decorations/Small Memorials	0.00	3,000.00	1,500.00	6,000.00	50	6,000.00
5 300 3	Love Offering	199.36	5,644.11	30.00	600.00	81	600.00
5 300 4	CD/DVD Work	0.00	0.00	0.00	300.00	0	300.00
5 320 1	Advertising	79.36	1,254.33	125.00	1,500.00	81	1,500.00
5 330 2	Upper Room	0.00	211.10	18.75	225.00	24	225.00
5 330 1	Ministry Trips	646.77	1,245.27	125.00	1,500.00	35	1,500.00
5 340 2	Special Towns	0.00	71.77	25.00	300.00	24	300.00
5 340 1	Quilts	9.58	21.32	16.63	200.00	11	200.00
	Education	51,254.37	56,350.29	51,360.38	513,425.00	64	\$90,425.00
5 400 1	Children's School Curriculum	82.55	602.13	61.17	1,000.00	69	1,000.00
5 404 1	Dayflow Christian Fellowship	0.00	100.00	0.00	0.00	0	0.00
5 410 1	DAYFLOW	185.56	1,498.48	125.00	1,500.00	100	1,500.00
5 420 2	Youth Ministry	9.88	743.76	125.00	1,500.00	51	1,500.00
5 420 1	Vocational Bible School	(813.99)	0.00	62.50	750.00	0	750.00
5 420 3	General Supplies	115.46	511.73	83.37	1,000.00	51	1,000.00
5 430 2	CE Committee Expenses	0.00	261.11	41.63	500.00	52	500.00
5 440 1	Passes & Student Recognition	0.00	283.86	44.91	400.00	21	400.00
5 450 1	Campships	0.00	50.00	41.63	500.00	10	500.00
5 450 2	Localship Training	0.00	0.00	25.00	300.00	0	300.00
5 450 1	Cambion	0.00	1,149.25	62.50	750.00	152	750.00
	Christian Education	579.06	85,264.33	8683.37	86,200.00	63	\$9,200.00
5 500 1	Pastor Base Salary	2,261.00	29,432.00	2,264.00	29,432.00	100	29,432.00
5 500 2	Housing Allowance - Pastor	2,500.00	30,000.00	2,500.00	30,000.00	100	30,000.00
5 500 3	Pension/Medical - Pastor	1,550.00	18,721.08	1,500.12	18,721.00	100	18,721.08
5 500 4	Travel Allowance - Pastor	299.50	7,079.89	166.63	2,000.00	102	2,000.00
5 500 5	Commuting Allowance - Pastor	138.00	2,432.55	183.27	2,200.00	101	2,200.00
5 500 6	Professional Expense - Pastor	205.71	1,742.37	166.63	2,000.00	60	2,000.00
	Subtotal Pastor	36,265.50	383,658.79	36,644.75	384,353.00	99	\$44,353.00
5 510 1	Director of Christian Educ	4,325.00	32,338.00	2,326.00	32,838.00	102	32,838.00
5 510 4	Director's Expense Reim - DCE	0.00	1,182.92	100.00	1,200.00	98	1,200.00
5 520 1	Director of Music	1,332.00	14,226.00	1,000.00	11,960.00	130	14,226.00
5 520 5	Business Expense Reimb - DOM	0.00	0.00	33.37	400.00	0	400.00
5 520 3	Organist	994.00	5,407.47	750.00	5,100.00	104	5,100.00
5 530 1	Office Manager	1,476.00	15,288.00	1,175.00	15,788.00	100	15,288.00
5 540 1	Child Care Workers	577.50	7,635.50	576.00	8,800.00	87	8,800.00
5 550 1	Temporary Employees	0.00	120.00	16.63	200.00	60	200.00
5 550 2	Self-Counseling Education	0.00	50.00	62.50	750.00	1	750.00
5 550 3	Staff Development	0.00	0.00	30.00	600.00	0	600.00
5 550 4	Non-employee Compensation	0.00	439.00	25.00	300.00	144	300.00
5 560 1	Utilities	1,230.00	7,891.44	634.50	5,418.00	72	5,418.00
5 570 1	Employment Taxes	481.62	6,087.40	423.00	6,150.00	59	6,150.00

Account Number	Account Name	Current Month	YTD to Date	Monthly Budget	Budget Year to Date	% of Budget YTD	Annual Budget
5 500 1	Workers Compensation	58.00	738.54	56.00	736.00	98	756.00
5 580 1	Terminace	583.50	2,477.50	0.00	3,000.00	114	1,000.00
5 580 2	Business Services	58.00	1,86.00	103.37	1,500.00	91	1,500.00
5 590 1	Bank Charges	0.00	55.55	8.37	100.00	57	100.00
5 590 2	Office Supplies	251.96	1,743.58	216.05	2,600.00	67	2,600.00
5 590 3	Postal Services	109.06	2,135.68	150.00	1,800.00	119	1,800.00
5 590 4	Committee Expenses	0.00	24.55	8.57	100.00	25	100.00
	Administration	\$16,255.50	\$184,159.36	\$15,675.49	\$189,251.00	97	\$189,251.00
5 600 1	Facilities Services	320.00	7,165.58	583.37	7,000.00	302	7,000.00
5 600 2	Supplies Consumable	251.95	1,797.13	150.00	1,800.00	140	1,800.00
5 600 3	Custodial Supplies	111.75	455.30	60.00	720.00	69	720.00
5 600 4	Blinds & Glass/Window Maint	264.33	1,296.04	150.00	1,800.00	85	1,800.00
5 600 5	Stove Rental	100.00	100.00	50.00	200.00	30	200.00
5 610 1	Electricity	44.77	734.55	600.00	7,200.00	103	7,200.00
5 610 2	Natural Gas	633.00	6,181.90	600.00	7,200.00	114	7,200.00
5 610 5	Trash Removal	59.29	743.66	38.37	700.00	107	700.00
5 610 6	Water	0.00	1,311.96	0.00	500.00	135	500.00
	Subtotal Facilities	\$1,908.00	\$18,551.82	\$2,251.74	\$27,620.00	104	\$27,620.00
5 620 1	Telephone	97.85	1,386.87	83.37	1,000.00	139	1,000.00
5 620 4	Internet Connection	69.51	835.40	70.87	850.00	99	850.00
5 630 1	Copier Lease	162.06	2,016.20	162.00	2,050.00	98	2,050.00
5 630 4	Copier Maintenance	312.10	1,790.54	35.00	1,632.00	110	1,632.00
5 630 5	Equipment Repair	0.00	359.19	30.37	400.00	58	400.00
5 630 6	Software/Work Services	0.00	738.04	62.50	750.00	106	750.00
	Subtotal Technology	\$641.90	\$7,090.82	\$345.11	\$6,632.00	106	\$6,632.00
	Subtotal Technology	\$2,009.29	\$15,642.64	\$2,799.85	\$34,202.00	104	\$34,202.00
5 700 1	Books of Order & Quilts/Quilt	0.00	187.00	16.67	200.00	84	200.00
5 710 1	Misc Session Expense	0.00	912.69	20.87	250.00	165	250.00
	Session	\$0.00	\$899.69	\$37.50	\$450.00	133	\$450.00
5 800 1	Deacon's Compensation Fund	62.55	1,753.81	100.00	1,200.00	144	1,200.00
5 810 1	Special Projects	0.00	233.74	41.63	340.00	47	300.00
5 820 1	Kitchen Guild	0.00	149.78	20.87	250.00	56	250.00
	Deacons	\$62.55	\$2,106.39	\$162.50	\$1,750.00	108	\$1,950.00
	Total Budgeted Expense	\$21,954.56	\$247,886.14	\$22,306.59	\$259,278.00	96	\$259,278.00
5 900 1	Exp from General Operating Fund	0.00	0.00	0.00	0.00		0.00
	Total Operating Expense	\$21,954.56	\$247,886.14	\$22,306.59	\$259,278.00	96	\$259,278.00
5 920 2	Exp from Maint & Cap Imp	495.00	-95.00	0.00	0.00		0.00
5 900 3	Exp from Building Fund	1,022.03	154,595.21	0.00	0.00		0.00
5 900 4	Exp from Endowment Fund	0.00	0.00	0.00	0.00		0.00
5 900 5	Exp from Endowment Investment	0.00	0.00	0.00	0.00		0.00
5 900 6	Exp from Endowment Reserve	0.00	0.00	0.00	0.00		0.00
5 900 7	Exp from Investment Control	3,288.99	3,288.59	0.00	0.00		0.00
5 900 8	Exp from Mission & Service	500.00	1,400.00	0.00	0.00		0.00
5 900 9	Exp from HCU Dev Fund	0.00	0.00	0.00	0.00		0.00
5 901 0	Exp from Memorial Fund	0.00	237.40	0.00	0.00		0.00
5 922 2	Exp from Baseball Fund	0.00	198.58	0.00	0.00		0.00
5 922 3	Exp from Vol Ministers FD	0.00	1,650.00	0.00	0.00		0.00
5 922 4	Ministry Organ Fund Expenses	0.00	0.00	0.00	0.00		0.00
5 935 1	Exp from Pastor's Discretionary	0.00	0.00	0.00	0.00		0.00
5 935 2	Exp from SERV Fund	0.00	0.00	0.00	0.00		0.00
5 935 3	Exp from Mission Trip Fund	51.17	2,895.00	0.00	0.00		0.00
5 935 4	Exp from Tax Rebate Fund	0.00	579.38	0.00	0.00		0.00
5 935 5	Exp from Christian Educ Fund	219.26	219.36	0.00	0.00		0.00
5 944 2	Exp from Adult Educ Fund	0.00	250.00	0.00	0.00		0.00
5 944 3	Exp from Jr Sr	0.00	0.00	0.00	0.00		0.00

Account Number	Account Name	Current Month	Year to Date	Monthly Budget	Budget Year to Date	% of Budget YTD	Annual Budget
5 944.4	Exp from VBS Fund	515.59	515.59	0.00	0.00		0.00
5 955.1	Exp from Staff Dev Fund	0.00	0.00	0.00	0.00		0.00
5 955.1	Exp from Town Sewer Fund	0.00	297.97	0.00	0.00		0.00
5 977.1	Exp from Session Funding Fund	0.00	0.00	0.00	0.00		0.00
5 988.1	Exp from Deacons Fund	0.00	0.00	0.00	0.00		0.00
5 997.1	Exp from OUMS Fund	0.00	254.92	0.00	0.00		0.00
5 999.2	Exp from Palmfest Fund	0.00	544.00	0.00	0.00		0.00
5 999.3	Exp from Potlucking Fund	555.00	1,068.00	0.00	0.00		0.00
5 999.4	Exp from Christmas Eve Fund	556.00	1,507.00	0.00	0.00		0.00
5 999.5	Exp from Summer Brunch Fund	0.00	219.77	0.00	0.00		0.00
5 999.6	Exp from Disaster Relief Fund	0.00	0.00	0.00	0.00		0.00
	Special Offerings	\$1,921.00	\$4,269.00	\$0.00	\$0.00		\$0.00
	Total Non-Budgeted Exp	\$7,614.43	\$170,475.83	\$0.00	\$0.00		\$0.00
	Total Expense	\$29,508.00	\$418,761.97	\$32,306.59	\$259,278.00	96	\$259,278.00
	Difference	\$1,443.13	(\$1,390.61)	(\$985.83)	\$122.00		\$122.00

BUILDING FUND INCOME STATEMENT

Year:	2006	2007	2008	TOTAL
Contributions	\$15,000.00	\$104,070.11	\$95,275.55	\$214,345.64
Other Income		\$4,257.85		\$4,257.85
Expenses		\$19,700.61	\$151,595.21	\$174,295.82
Yr End Bal	\$15,000.00	\$103,627.35	\$44,307.67	\$44,307.67

**BUILDING ADDITION BALANCE SHEET
December 31, 2008**

LIQUID ASSETS	
Cash	\$44,307.67
FIXED ASSETS	
Building Addition	\$420,856.31
TOTAL ASSETS:	\$465,163.98
LIABILITIES	
Draw 1 -	\$62,340.10
Draw 2 - 12/16/08	\$144,395.53
Draw 3 - 12/17/08	\$117,458.22
TOTAL LIABILITIES:	5324,193.85
NET WORTH	
Cash	\$44,307.67
Building Addition	\$96,662.46
TOTAL LIABILITIES AND NET WORTH:	\$465,163.98

**PIANO LOAN BALANCE SHEET
December 31, 2008**

ASSETS - Pianos	\$15,695.00
LIABILITY - Loan Balance	\$8,469.14
NET WORTH	\$7,225.86
TOTAL LIABILITIES AND NET WORTH:	\$15,695.00

Financial Secretary Report
Annual Report 2008

Hilliard Presbyterian Church - Hilliard, OH 43026

<u>Account Name</u>	
101 Committed Giving	\$231,713.54
102 Loose Offering	\$2,718.67
103 Initial Giving Contributions	\$306.00
104 Contributions to Per Capita	\$2,758.40
105 Contributions to Flowers	\$1,245.00
106 Contributions to LOGOS	\$349.70
107 Rental Income	\$1,300.00
108 Misc Reimbursements	\$1,184.10
109 Other Operating Income	\$1,248.46
General Fund:	\$242,823.87
133 Contr to Building Fund	\$95,025.53
144 Contr to Endowment Fund	\$95.00
148 Contr to Mission & Benevolence	\$50.00
151 Contr to Memorial Fund	\$694.00
223 Contr to Music Fund	\$250.00
333 Contr to Mission Trips	\$2,650.00
334 Tax Rebate Donation	\$750.00
441 Contr to Christian Education	\$1,000.00
442 Contr to Adult Education	\$492.20
443 Contr to JR/SR Assistance	\$173.79
444 Contr to VBS Fund	\$54.65
991 OGHS Offering	\$794.77
992 Pentecost Offering	\$560.00
993 Peacemaking Offering	\$620.00
994 Christmas Joy Offering	\$596.00
995 Souper Bowl Contributions	\$209.77
Special Offerings:	\$2,780.54
-----	-----
Total:	\$346,839.58

Hilliard Presbyterian Church Building Committee

2008 Annual Report
February 8, 2008

In 2008 the HPC building committee spent the early part of the year meeting with architect Bob Apel refining the plans for the addition and renovation. Additionally, local lending institutions as well the denominational lending office were interviewed. In April, the committee recommended and the congregation approved the mortgaging of the property with National City Bank at an amount not to exceed \$1,400,000.00.

Next came the interview and selection process for the general contractor. After interviewing 4 different contractors, O'Brien Robinson Construction Services, Inc. was selected to proceed with the addition and renovation.

Ground breaking was celebrated during Sunday morning worship on June 1, 2008. The service was held outside under the trees "in" the sanctuary. We were pleased to be able to have the first shovel of dirt turned by 6 charter members: Joann Blalock, Betty Cuniberti, Jan Domingus, Marianna McAllister, Susie Noxon and Millie Raver. The entire congregation then joined in the ground breaking with a potluck dinner.

Following a number of unexpected delays from the City of Hilliard, work began in earnest beginning in September. By the end of 2008, the exterior and interior framing was virtually complete, two of the renovated rooms were done and back in service. Every week brings new and sometimes unexpected changes and opportunities.

This report would be incomplete without a mention of how truly blessed HPC is to have hired O'Brien Robinson Construction Services to manage our project. Tom O'Brien, David Hutchinson and Ryan Hillis in particular have been total astounding. They always work with our best interests first and have gone over and above in accommodating the church's needs. When we have encountered the inevitable bumps in the road, they have smoothed them out quickly and without complaint.

We continue to work for a speedy completion of the project and look forward to worshipping with our HPC family in the new sanctuary soon.

HPC Building Committee

Greg Bohn, Karen Brown, Terry Butterworth, Jim Martin, Dave Norton, Dave Opalek, Millie Raver, Sandy Schwartz, Rev. Jim Browne, Beth Clothier, Beth Lewis, and Kim Trimboli,.

Administration Committee Report for 2008

The committee updated all job descriptions for staff and instituted a new evaluation system.

In February, we hired Joshua Brodbeck as our organist for both services.

Joyce Johnson offered to do market research for solid information on salary standards for staff for churches our size. This effort was to provide a goal for HPC to work toward in assuring that our staff was being properly compensated.

In August, we said farewell to Joshua as he moved to Bloomington, IN to attend IU. Joshua was gracious enough to recommend a new person for the organist position and in September, we hired Isaac Leaverton.

Due to the economic crisis affecting our nation, our projected income 2009 was lower than budget requests. In this, we are not alone. Many other churches around the area are cutting back on activities, programs, etc.

1. Budget cuts were necessary.
2. The costs of running and maintaining the new building are going to be higher than what we currently pay.
3. We are not able to increase the wages for our hardworking staff.
4. Money is going to be very tight this year.
5. The need for members to volunteer time is imperative.

In working to keep HPC running as smoothly as possible the following measures were taken:

1. The total dollar amount for the 2009 budget was kept at the total spent for 2008.
2. This meant total allowable dollars for each committee was reassessed and the amounts were redistributed among committees.

HPC joined the SVPUC (Scioto Valley Presbytery Utility Consortium) to work to negotiate lower utility costs. The SVPUC was able to negotiate a natural gas cost of \$0.824/ccf. This price took effect January 1, 2009. This price is available to us from IGS. This is significantly lower than the Columbia Gas rate of \$1.16995. This should produce significant savings for HPC, especially with the new addition.

In Christ,
Paula Garman, Chair
Dave Hulburt, Treasurer

Music and Worship Committee

Music and Worship Annual Report

2008

The initial 2008 members of the Music and Worship Committee were Peg and Darrel Delong, Tony Trimboli, Paula Garman, and Eve Goodwin. David Johnson and Lowell Hires co-chaired the Committee, and Rev. Browne and Beth Clothier were staff members assigned to our committee. During the course of the year Lowell Hires resigned from Session, and Tony Trimboli and Paula Garman resigned the committee to take Session appointments. Kelsey Randall, Dottie Moorhead, and Rick Garman were added to the committee during the year.

Our year was very busy and challenging, given the changing committee membership. Some highlights include:

- We hired in succession two keyboardists. We started the year with Joshua Brodbeck who provided exceptional service until he received an opportunity to further his education. In August, we interviewed and made an offer to Isaac Leaverton who is currently serving with distinction.
- The choir attended the Birmingham Choir Festival in April.
- We analyzed and discussed issues related to moving from two Sunday services to one.
- We acted on issues related to the new sanctuary, including gaining Session permission to sell the existing organ and planning for an eventual new organ.
- A new Parish Associate, Jill Rasmussen-Baker, was accepted.
- The Dubuque College Choir provided a concert in May; choir members stayed with our congregation.

The 2008 goals of this committee were carryovers from the year before. They were:

1. Encourage more participation among all members – with a goal of 70% participation in worship services.
2. Provide at least two community outreach programs
3. Increase diversity in worship service experiences with at least 8 special services

Objective 1

We worked to involve as many members as possible in various activities related to worship. The following groups or taskforces were organized by committee members:

- Acolytes – Dottie Eaton and Kim Trimboli recruited and trained youth to participate in the Sunday Morning Worship by lighting candles and ringing the bell.
- Communion – Peg Delong prepared communion elements for communion services, and signed up communion servers.
- Ushers – Darrel and Peg Delong recruited, trained, and scheduled ushers for worship services.

- Lay Readers – Tony Trimboli recruited and trained lay readers until he left the committee and was replaced by Rick Garman.
- Sanctuary Committee – Dottie Eaton chaired this committee, which is responsible for changing paraments, maintaining candles, refreshing pew supplies, preparing candles for the Christmas Eve service, and generally providing care for the sanctuary.

We estimate that approximately 178 different persons participated in our Objective One activities. Our objective was to involve 70% of the congregation. Assuming membership is approximately 215, our goal was met again this year with a participation rate of approximately 83%.

Objective 2

We participated in Carnival and helped plan an outdoor service related to groundbreaking. In addition we facilitated the Dubuque Choir visit.

Objective 3

We worked with the staff to facilitate the following special services:

- Ash Wednesday
- Maundy Thursday
- Palm Sunday
- Services during Holy Week
- Easter Sunday
- Pentecost
- Two outdoor worship services
- Reformation Sunday
- Consecration Sunday
- Christmas Eve and Christmas Day services

We also planned and implemented the following special events, studies, and activities:

- Hanging of the Greens
- Training session for new volunteers

In closing, I would like to recognize the hard work of both Joshua Brodbeck and Isaac Leaverton. I would like to thank my dedicated committee members as well as the constant support of our Director of Music, Beth Clothier, and our Pastor, Jim Browne. Without all of their hard work, the task of the Music and Worship Committee would be impossible.

Yours in Christ,

David L. Johnson – chair

Annual Report 2008

The 2008 Stewardship committee was composed of Karmel Randall and Brenda Pritchett. The committee conducted the annual stewardship campaign, including speakers, leaders' dinner, written correspondence and luncheon preparation. The committee used the Consecration Sunday stewardship program developed by Herb Miller as our framework and made small changes in the program to best fit our needs. We chose a theme of "Sowing the Seeds of Stewardship, Cultivating Stewardship and Reaping the Rewards of Stewardship" for our minutes for mission. We held the leaders' dinner before the October session meeting as a light, casual dinner to kick off the Stewardship program. We were honored to have Reverend John Stull as our speaker for the leaders' dinner and for the sermon on Consecration Sunday. The estimated campaign results were as follows:

2009 Campaign Results

88 – Estimate of Giving Cards Returned to Date

Note: 16 cards still outstanding as of Dec 31, 2008

\$228,500– Total Estimated Giving Income

Note: ~\$12,500 (5%) decrease over last year

The committee promoted the four special offerings for the year – One Great Hour of Sharing, Pentecost, Peacemaking and Christmas Joy offering. In support of mission, the Stewardship committee planned and sponsored a trip to Buckhorn Children and Family Services. We also chose Buckhorn to receive the percentages of our special offerings designated for children at risk. Adults and youth both joined our mission trip in July to Buckhorn in Chesterville, Ohio. We painted a barn and landscaped one of their entrances. We delivered quilts to the boys from our HPC quilters. They provided us with pizza for lunch and spent time talking with us about the boys and their many different situations which led them to Buckhorn. Our 2008 donations to Buckhorn include 40% from the Pentecost offering to assist children at risk and 25% from the Peacemaking offering.

In 2008, the Stewardship Committee took part in the HPC Carnival and served at the Ice Cream Social. The Stewardship committee also monitored and approved fundraising events within the church as established by the Fundraising Guidelines.

Karmel Randall
2008 Stewardship Chair

Mission and Outreach Committee

2008 Annual Report to Session

Elders: Tony Trimboli and Nancy Callison
Members: Mary Norton, Susan Osborne and Beth Lewis
Task Force members: Becky Dailey- Greeters and Diana Boyer- Marysville Reformatory

Gave more attention to Marysville Women's Reformatory Ministry

1. Bulletin board: Covered and printed signs to place on the board. Information about the Meals on Wheels program was also posted.
2. Candy box: Pressed for monthly collection- first Sunday of every month for monthly bingo (200-300 for monthly bingo nights)
3. Christmas Party: Purchase candy canes, collected travel-sized toiletries during November's soap drive to create individual gift bags as presents (400+ for Christmas party).

Visitor information

1. Revised pamphlet- should be redone for 2009- new organist, new parish associate, new building
2. Displayed guest book. The guest book was donated by Karen Talarico (Tony's mother).
3. Designed printed and framed HPC Mission Statement. It was hung by the library, but may want to move it near the entrance to the new sanctuary when it is completed. Money for frame was donated by Karen Talarico.
4. Purchased new pew pad covers (tax rebate money).
5. Purchased greeter pins (tax rebate money).
6. Purchased usher pins (tax rebate money).
7. Took over the responsibility of recruiting greeters from Worship and Music committee and wrote a job description.

Advertising

1. Entered Sunday service information on the Christian Radio station The River's church listing website. <http://www.1049theriver.com/churchlistings.html>
2. Normal weekly advertisement in the Northwest News.
3. Advertising special services in the Northwest News; Ash Wed., ground breaking, Easter and Christmas.
4. Created church letterhead
5. Tried to update the Mission web page on the church website. New software was purchased facilitate this but was placed on DCE's and pastor's computers. A request to make this program accessible to all, as well as classes to train people was discussed with technology committee but no training sessions were ever set-up.

Mission Trips and events

1. June- Project Hospitality (Staten Island, NYC) organized by Kim Trimboli, Christian Ed.

2. June-Buckhorn Youth Ranch mission, organized by Karmel Randall, Stewardship.
3. October- H.O.M.E.S (Neon, Kentucky), organized by Dave Norton
4. August-Assisted in organizing and running the 1st annual charity Golf tournament initiated by HUMC. Bill Zielenbach was HPC's representative for this event. The event generated over \$4000 dollars after expenses for the Hilliard Welfare Council, which runs the Hilliard Food Pantry as one of its programs.
5. October-Crop walk: Started recruiting walkers one month in advance and bought lunch day of walk. HPC raised \$2660 in 2008.
6. October & November- We were assigned a Mission Partner from the South Pacific through our Synod's Mission to the USA program.
 - a. Filled out application in early April and then notified that we would receive a mission partner in May.
 - b. Organized 3 classes in September to preparation for her visit. The committee worked with the Christian Ed committee to accomplish this.
 - c. Two trips to Detroit to pick-up (Oct 1st) and return (Nov 12th) our mission partner.
 - d. Establish and kept track of her schedule during her entire stay. A big THANK YOU to HPC member Margie Filichia who hosted her for the six weeks she was here.

Facilities Committee

Annual Report
2008

The 2008 members of the Facilities Committee were Todd Brown, Matt Butterworth, Neil Furr, Jim Goodwyn, Scott Long, Jim Ray and Wendy Ray. Terry Butterworth was the chair of the committee.

- Per suggestion of Tony Trimboli, a Maintenance Request form was created to give the congregation an easy way to identify areas of concern within the church building and grounds. This also provided a way for the committee to track maintenance tasks and costs.
- Completed maintenance tasks as they came in.
- We were given the task of renegotiating the service contract with Jani-King to reduce the cost of cleaning services. A new contract was in place by April.
- Faucets were replaced in the Kitchen and some plumbing updated.
- Organized a Spring clean up day for both the interior and exterior of the church. The Women's Group provided refreshments.
- Hazardous waste collected from the clean up day was taken to a designated SWACO location for proper disposal.
- Worked with insurance adjuster and various others on the water damage to the church from heavy rain. Carpets were cleaned, the roof fixed and ceiling tiles were replaced.
- Committee chair began attending the Building Committee meetings.
- The committee cleared out and later demolished the exterior storage area to make way for new construction.
- Organized a church basement clean up to remove unwanted items and make way for renovations.
- Organized moving items out of the Library and Theater rooms for renovations.
- Had the task of maintaining the Memorial Plaques reassigned to the office.
- The committee performed winterization maintenance on the mower instead of sending it out for a fee.
- Began an inventory of keys to the church building.
- Began investigating options for snow removal.
- By some fluke, the chair has become the unofficial Town Hall Meeting leader.

I want to give special thanks to the members of this committee. They are a very hard-working group and more often than not only hear about problems with the building and grounds instead of what is working well. Also special thanks to the leadership of Todd

Brown and Jim Goodwyn for training the rest of us on using the mower, lighting pilot lights, and every other quirk with the building.

HILLIARD PREBYTERIAN WOMEN 2008 ANNUAL REPORT

OUR PURPOSE

Forgiven and freed by God in Jesus Christ, and empowered by the Holy Spirit, we commit ourselves

- To nurture our Faith through prayer and Bible study
- To support the mission of the Church worldwide
- To work for justice and peace
- And to build an inclusive, caring community of women which strengthens the Presbyterian Church (U.S.A.) and witnesses to the promise of God's Kingdom

MEMBERSHIP

Membership in Presbyterian Women is open to all women. PW members are those who choose to participate in OR be supportive of Presbyterian Women in any way.

In our congregation, we offer three circles (Deborah, Diana and Priscilla) which meet monthly to provide an inclusive, caring Community of women where

- Faith is nurtured and growth takes place through worship, study, friendship and outreach
- Women are challenged to stretch beyond their limits
- Women move beyond the safe places of life and reach out to others

Our Bible Study for 2008 focused on the studies of the Old Testament books of Ruth and Jonah. Pastor Jim frequently joined our gatherings to teach, share and inspire us, for which we thank him for encouraging us to seek out and discover new ways that God works in and through us

In addition, it was an absolute joy when Maïne came to our Church. She attended Circle Meetings, helped at the Election Bake Sale and traveled with us to Newark for a PW meeting where they treated her like a rock star!

MISSIONS

2008 gave us the Blessing and opportunity to support Missions of the Church at home and worldwide. Our Projects included:

2 Cents-A-Meal Program, providing donations to the

Hilliard Food Bank	\$313.25
Amazing Grace Baptist Church	374.43
Hilliard Summer Lunch Program	283.40
Bethlehem First Community Church on Broad St	340.78
Hilliard Welfare Council	<u>281.51</u>

TOTAL \$1,593.37

We wish to sincerely thank our Congregation for the generous support of this program and thank you to the children for collecting the gifts at both services

Knit or Sew Ministry

Millie Raver has served as the coordinator for this ministry for 2 years. The program provides shawls to those who need comfort, love, hope and joy. A circle of friends meet twice a month to knit, crochet, pray and enjoy fellowship. Everyone has enjoyed the program..... including men! In addition, Kim and Betty Patch enhanced this program by knitting "Warm Woolies", providing warm wool clothing for children living in orphanages in Russia, Kazakhstan, China, Mongolia and tribal reservations in South Dakota.

In the fall of 2008, we also began 2 additional knitting ministries: "Sowing Scarves" provided crocheted and knitted scarves and hats at Christmas for the children at Amazing Grace Baptist Church. "Warm up America" was another program for involvement by the Presbyterian Women of HPC as well as members of our Congregation. 7"x 9" knitted or crocheted squares were collected for making quilts and blankets for the homeless, shelters and other non-profit agencies.

Again, thank you HPC Congregation for participating in these ventures and ministries.

ADDITIONAL MINISTRIES

With the guidance of our Lord, the generosity of the Congregation and the energy and time on behalf of the Presbyterian Women, we were blessed to provide gifts and donations to the following:

- Buckhorn Children and Family Services
- Choices (crusade against domestic violence)
- Ministry of Hope – Malawi, Africa
- Holiday Fruit Baskets to HPC shut-ins
- Afghans for graduating seniors
- Prayer shawls to Westminster Thurber Community
- 68 cards of care and concern mailed during the year
- Courage House (women's recovery center) Newark, Ohio

GATHERINGS

Members of PW at HPC traveled to Ohio Presbyterian Churches in Athens, Newark, Reynoldsburg and Upper Arlington to celebrate the Missions of the Church worldwide and to enjoy fellowship, worship, and each other.

OPPORTUNITIES

- Cake raffle at summer HPC carnival
- Garage and bake sale in May
- Bake sale – November election
- Purchased centerpiece for funeral luncheon
- Purchased lace tablecloths, chafing dishes, ½ pans and serving pieces for HPC functions
- Sold Panera Bread coupons
- Fulfilled commitments to Presbyterian Women of the Presbyterian Church (U.S.A.)
 - Least Coin \$30.00
 - Thank Offering \$374.50
 - Annual Pledge \$400.00

2008 COORDINATING TEAM

Moderator – Sandy Fox Secretary – Millie Raver
Treasurer – Evelyn Entler Program – Ginny Wholf
Missions & Local Service – Karen Wholf
Diana Circle – Betty Parrish Deborah Circle – Betty Cariberti
Priscilla Circle – Joann Blalock

Respectfully submitted:

Sandy Fox - Moderator

HPC Board of Deacons
Annual Report 2008

2008 Board of Deacons

Betty Affeldt	Faith Parish
Peg Delong	Love Parish
Eve Goodwyn	Joy Parish
Teresa Johnson	Grace Parish
Beth Lewis	Humility Parish
Millie Raver	Patience Parish

Officers

Moderator	Peg Delong
Vice-moderator/Secretary	Millie Raver

The Board of Deacons is responsible for ministering to those in need, the sick, the friendless and any that may be in distress, in accordance with the Scriptures. (Acts 6:11 and Timothy 3: 8-13). Our Mission is to care for the members of Hilliard Presbyterian Church and members of our community with love and compassion. Our goal is to help others experience God's love in tangible, meaningful ways as well as intangible, spiritual ways.

Specific responsibilities approved by Session

1. Provide a ministry of compassion
2. Maintain a parish plan- for fellowship and communication
3. Administer Deacon's Fund
4. Provide community building activities
5. Assist with Communion when asked
6. Oversee the Prayer Chain, Meals of Wheels and the Kitchen Guild

HPC Deacons are required to attend monthly meetings and support their assigned parishes. The phone tree is one source the Deacons use to communicate important information to our congregation. The Deacons also maintain contact with the members of their parishes through special occasion cards, visits, flowers, face -to-face conversations and phone calls. With six Deacons and large parishes, communication between Pastor, church staff, Elders, Deacons and all of our congregation is essential for the Deacons to carry out our Ministry of Compassion.

This year the Deacons have

1. Organized a Game Night to benefit the Hilliard Summer Lunch Program
2. Helped organize a potluck to celebrate the Ground Breaking of our expansion
3. Helped with the ice cream social
4. Helped with the outside Carnival
5. Helped organize the Leadership Picnic
6. Organized the farewell potluck for Maine as she returned to the Cook Islands

7. Attended two Retreats with the Elders

2008 presented many challenges and opportunities for the Deacons, and hopefully we managed to serve our congregation with love and compassion. We thank all the Deacons for their hard work and dedication, and say a fond farewell to outgoing Deacons Millie Raver and Peg Delong.

Respectfully submitted,
Peg Delong, Moderator 2008

TOTAL BUDGETED INCOME	\$244,650
TOTAL BUDGETED EXPENSES	\$244,650
SURPLUS/(DEFICIT)	

BUDGETED EXPENSES:

5.10.01	Stewardship Materials	\$600
5.11.01	Endowment Committee	
STEWARDSHIP EXPENSES		\$600

5.20.01	Pulpit Supply	\$750
5.20.02	Organ Supply	\$450
5.20.03	Musicians	\$250
5.21.01	Flowers	\$900
5.22.01	Sheet Music	\$200
5.22.02	Supplies	\$300
5.23.01	Instrument Maintenance	\$750
5.23.02	Robe Maintenance	
5.24.01	Wedding/Funeral Organist/Choir Dir	
5.25.01	Piano Loan Interest	\$525
5.25.02	Piano Loan Principal	\$4,075
WORSHIP EXPENSES		\$8,200

5.30.01	Denominational Benevolence	\$900
5.30.03	Local Mission	\$50
5.30.04	CROP Walk	
5.32.01	Advertising	\$1,250
5.32.02	Upper Room	\$225
5.33.01	Mission Trips	\$300
5.33.02	Special Events	\$75
5.34.01	Quilts	\$25
MISSION OUTREACH EXP		\$2,825

5.40.01	Church School Curricula	\$850
5.40.41	Expansitures from CE Fund	\$100
5.41.01	WOW	\$1,500
5.41.02	Youth Ministries	\$1,250
5.42.01	Vacation Bible School	
5.43.01	General Supplies	\$600
5.43.02	Committee Expense (Checks, CPR)	\$400
5.44.01	Teacher & Student Recognition	\$300
5.45.01	Camperships	
5.45.02	Leadership Training	
5.46.01	Carnival	
CHRISTIAN EDUCATION EXP		\$5,000

5.50.01	Pastor Base Salary	\$29,448
5.50.02	Housing Allowance - Pastor	\$30,000
5.50.03	Pension/Medical - Pastor	\$18,726
5.50.04	Travel Allowance - Pastor	\$1,800
5.50.05	Continuing Education - Pastor	\$1,500
5.50.06	Professional Expenses - Pastor	\$1,200
5.51.01	Director of Christian Education	\$52,856
5.51.04	Expense Reimbursement - DCE	\$900
5.52.01	Director of Music	\$14,208
5.52.05	Expense Reimbursement - DOM	\$200
5.52.06	Organist	\$12,000
5.53.01	Office Manager	\$15,288
5.54.01	Child Care Workers	\$6,500
5.55.01	Temporary Employees	
5.55.02	Staff continuing education	
5.55.03	Staff Development	
5.55.04	Non-employee Compensation	\$300
5.56.01	Per Capita	\$7,162
5.57.01	Employment Taxes	\$6,185
5.57.02	Worker's Compensation	\$760
5.58.01	Insurance	\$4,300
5.58.02	Business Services	\$75
5.59.01	Bank Charges	\$267
5.59.02	Office Supplies	\$1,450
5.59.03	Postal Services	\$1,750
5.59.04	Committee Expenses	
ADMINISTRATION EXPENSES		\$186,875

5.60.01	Janitorial Services	\$7,000
5.60.02	Service Contracts	\$1,800
5.60.03	Custodial Supplies	\$550
5.60.04	Buildings & Grounds Maintenance	\$1,400
5.60.05	Snow Removal	\$500
5.61.01	Electricity	\$10,000
5.61.02	Natural Gas	\$10,000
5.61.03	Refuse Removal	\$780
5.61.06	Water	\$1,200
5.62.03	Telephone	\$1,200
5.62.04	Internet Connection	\$840
5.63.03	Copier Lease	\$2,000
5.63.04	Copier Maintenance	\$1,690
5.63.05	Equipment Repair	\$250
5.63.06	Software/Web Services	\$500
FACILITY/TECHNOLOGY EXP		\$39,450

1/8/2009 11:57 AM

5.70.01	Books of Order & Confessions	\$200
5.71.01	Miscellaneous Session Expense	
SESSION EXPENSES		\$200

5.80.01	Deacon's Compassion Fund	\$1,200
5.81.01	Special Projects	\$200
5.82.01	Kitchen Guild	\$100
DEACONS EXPENSES		\$1,500

TOTAL BUDGETED EXPENSES \$244,650

BUDGETED INCOME:

4.01.00	Estimate of Giving	\$182,692
4.01.01	Other Envelope Giving	\$45,808
4.01.02	Loose Offering	\$2,800
4.01.03	Initial Giving Contributions	\$300
4.01.04	Contributions to Per Capita	\$3,400
4.01.05	Contributions to Flowers	\$1,350
4.01.06	Contributions to LOGOS	\$400
4.01.07	Rental Income	\$3,350
4.01.08	Miscellaneous Reimbursements	\$1,350
4.01.09	Other Operating Income	\$1,500
4.01.11	Bank Account Interest	\$1,500
TOTAL BUDGETED INCOME		\$244,650

1/8/2009 11:58 AM

Changes in Terms of Call

'Terms of call' are the terms under which a pastor serves a congregation. These are first set when the pastor comes to serve the congregation. Three parties must agree to these terms, the pastor, the congregation, and the presbytery. Only the congregation can change these terms. The session is responsible for all the finances of the congregation and takes action to give raises to other employees. They recommend changes to the terms of call to the congregational meeting.

<u>Terms of Call</u>	<u>[no change from 2008]</u>	<u>Proposed</u>
Salary		29,432.00
Housing Allowance		30,000.00
Pension/Medical		18,721.00
Travel		2,000.00
Continuing Education		2,200.00
Professional expenses		2,000.00

Notes:

1. Salary and Housing together are what is called 'effective salary'.
2. Pension/Medical is not money received by the pastor, it is a cost of having a pastor. This amount is fixed by the denomination at a % of the effective salary. A portion of this goes to fund the pastor's pension, the rest goes to provide major medical coverage.
3. Travel, Continuing Education, and Professional Expenses are line items which are paid out only on a reimbursement basis. After the funds are spent and receipts provided the amounts can be paid.
4. Travel is nearly all car miles and is paid at the IRS defined rate.
5. Professional Expenses include books and professional journals, robes, and stoles.